



## EXTERIOR PERSPECTIVE

This is the front view of the project showing the fusion of modern and traditional theme; here the spaces revel in a perfect balance of material, color and volume.

## INTRODUCTION

The project aims to learn about the values of traditional architecture of Kerala and how one can still retain those values in today's time in modern context.

## DESIGN THEME

Fusion of traditional and contemporary design with straight lined furniture and veneer glossy finishing along with the use of marble.

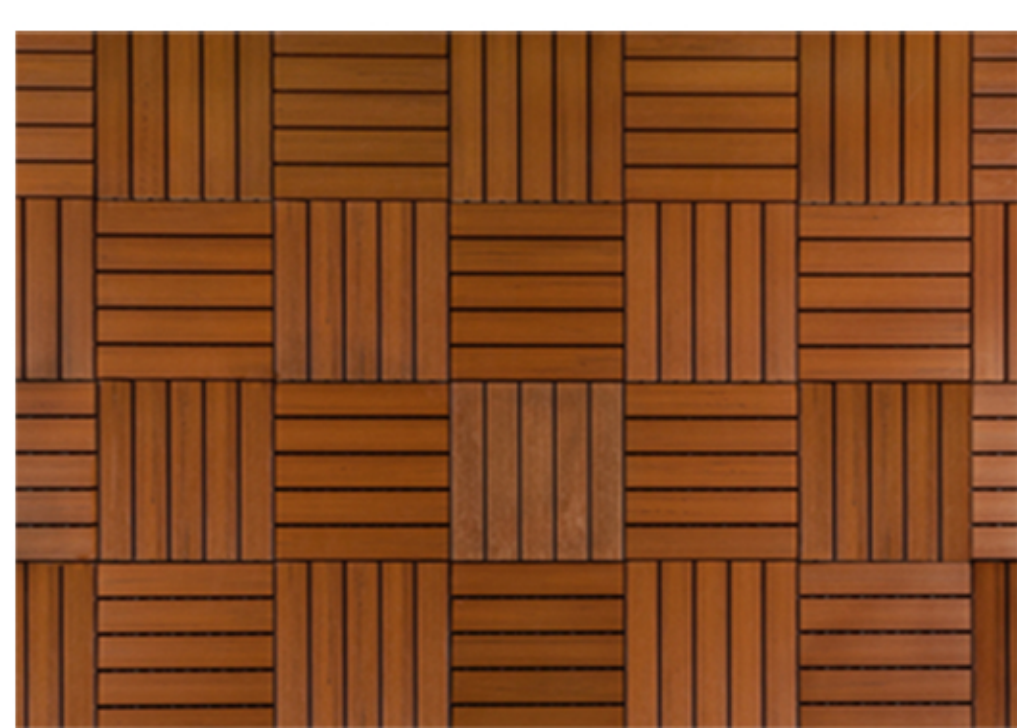
## CONCEPTUAL MOOD BOARD



## MATERIAL BOARD



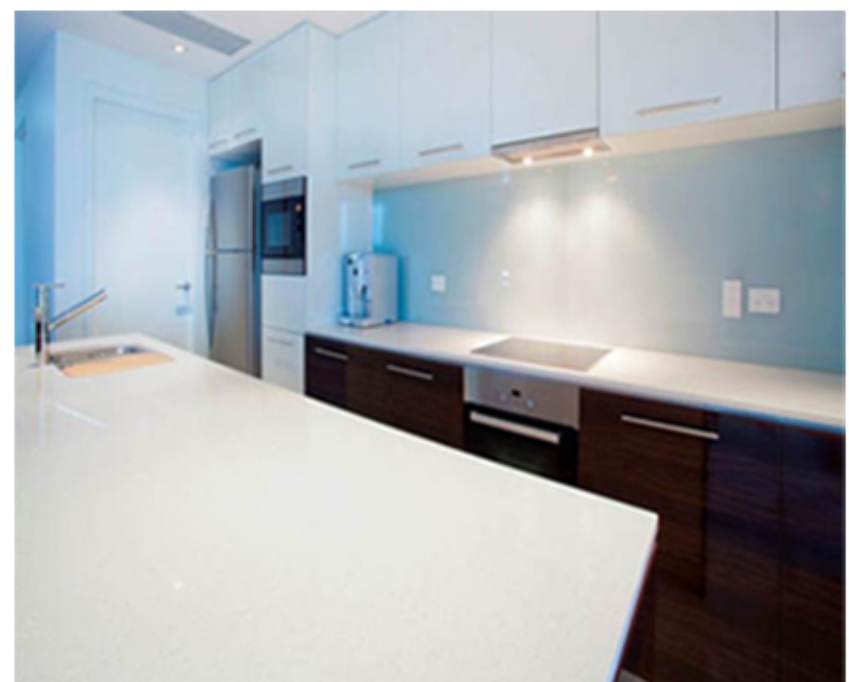
High pressure Mahogany laminate  
Finishing: Powder coated



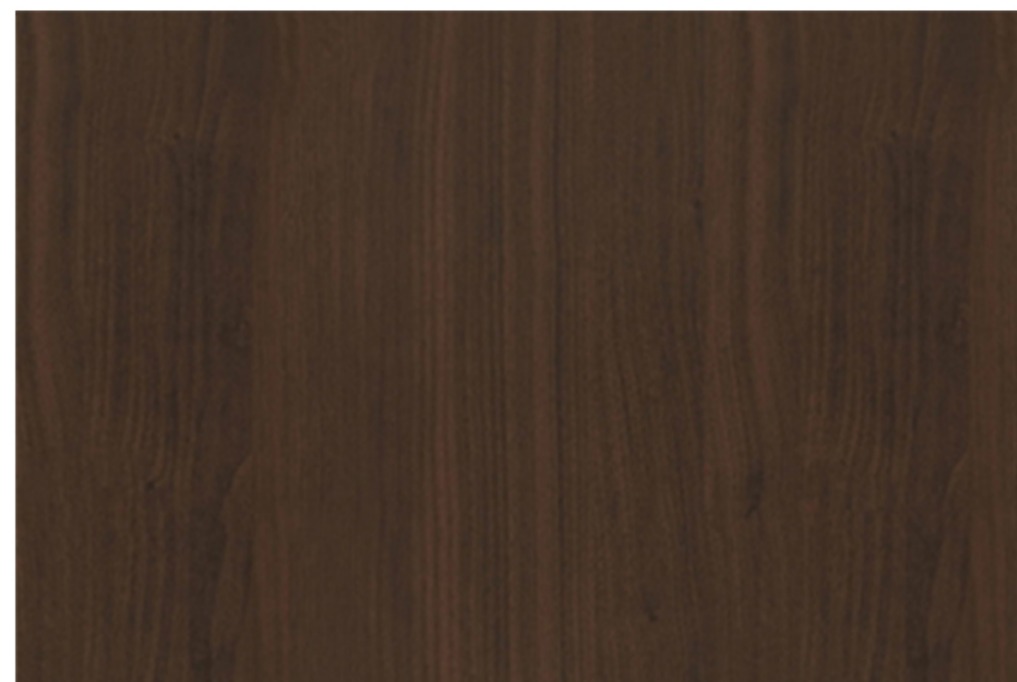
Hardwood deck tiles  
Material: Hardwood  
Finish type: Matte



Black slate wall cladding  
Finish: Natural  
Color: Black



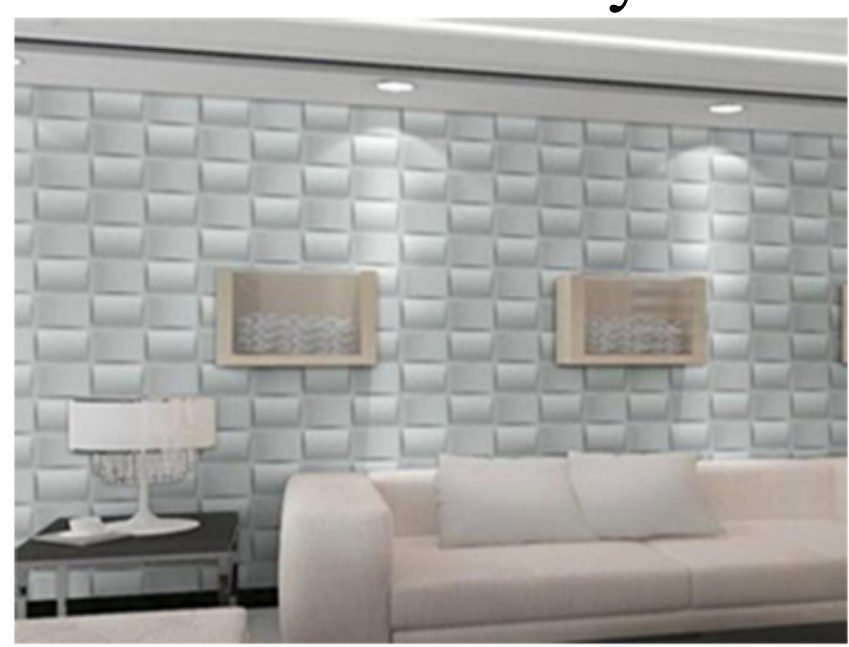
Acrylic solid surface corian top  
Finish: Glossy



Glossy wooden laminate  
Finishing: Glossy  
Material: Wooden



Teak wood flooring  
Finish: Matte



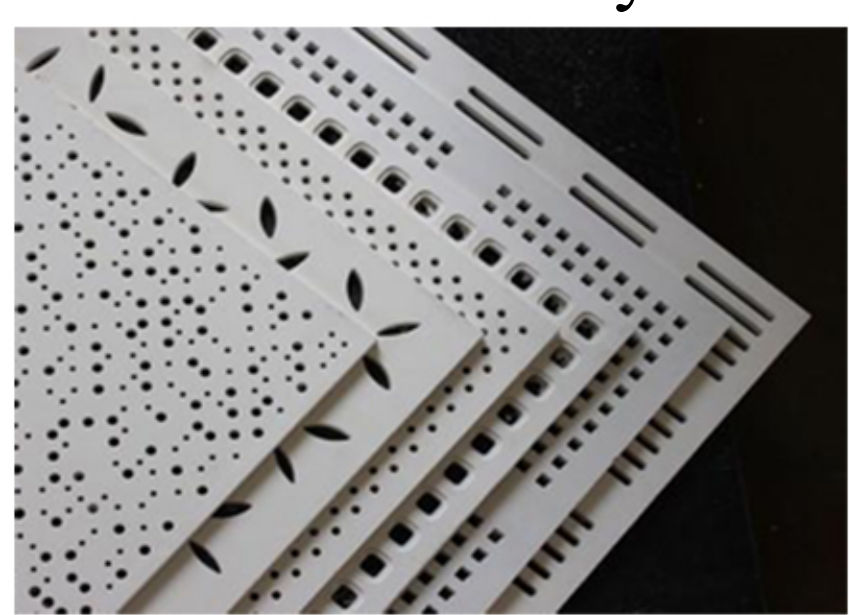
White pvc 3d wall panel  
Finish: Glossy



3D pvc wall panel  
Material: PVC



Decorative acid textured glass  
Material: Glass



Gypsum acoustic panel  
Finish: Gypsum



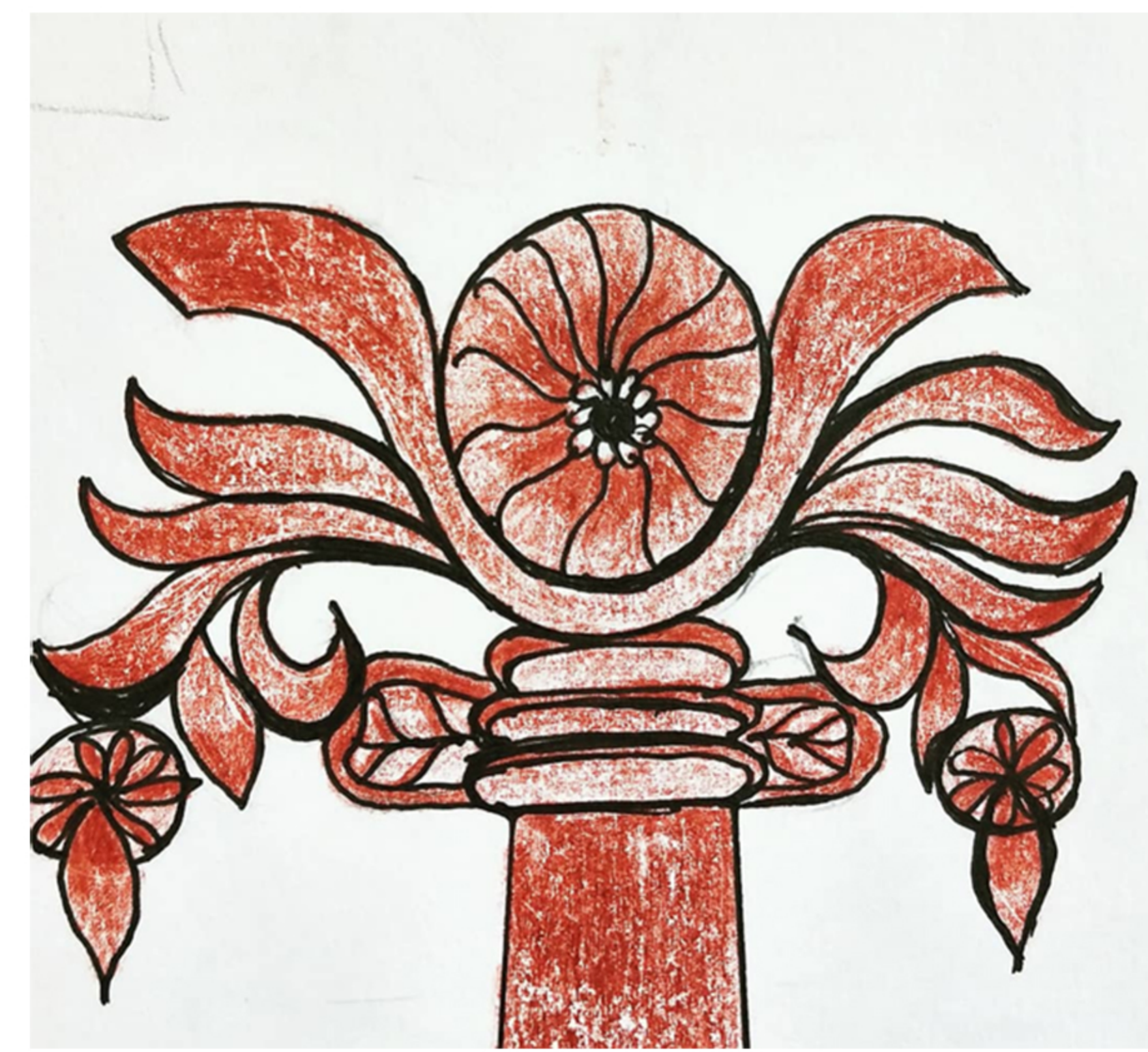
Marble floor tiles  
Finish: polished



Wooden floor tile  
Finish: Matte

## DESIGN CONCEPT

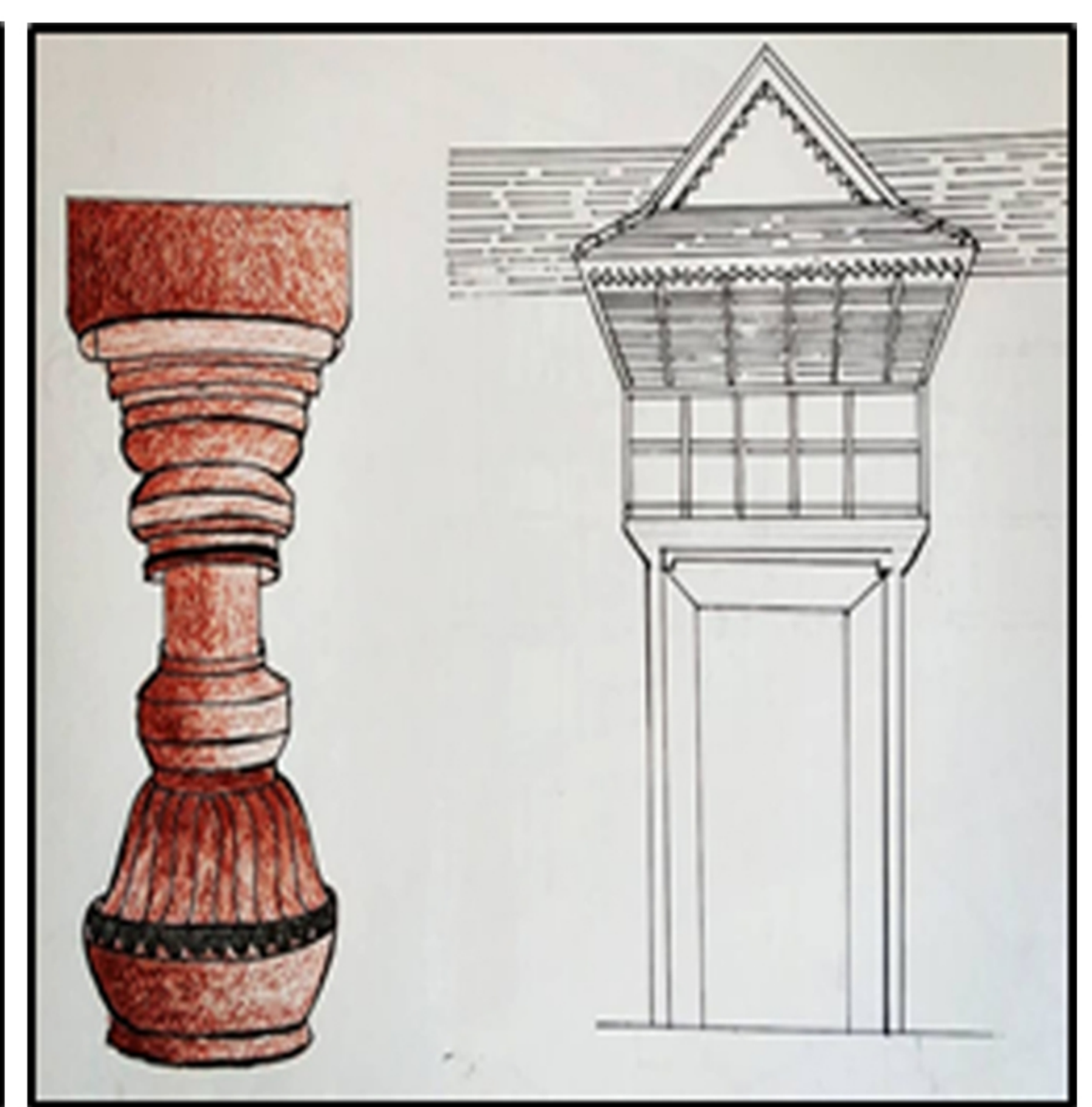
Conceptual design of this project was inspired from the a simple form 'FLOWER' which was taken from the traditional carvings of Kerala.



## CONCEPTUAL SKETCHES



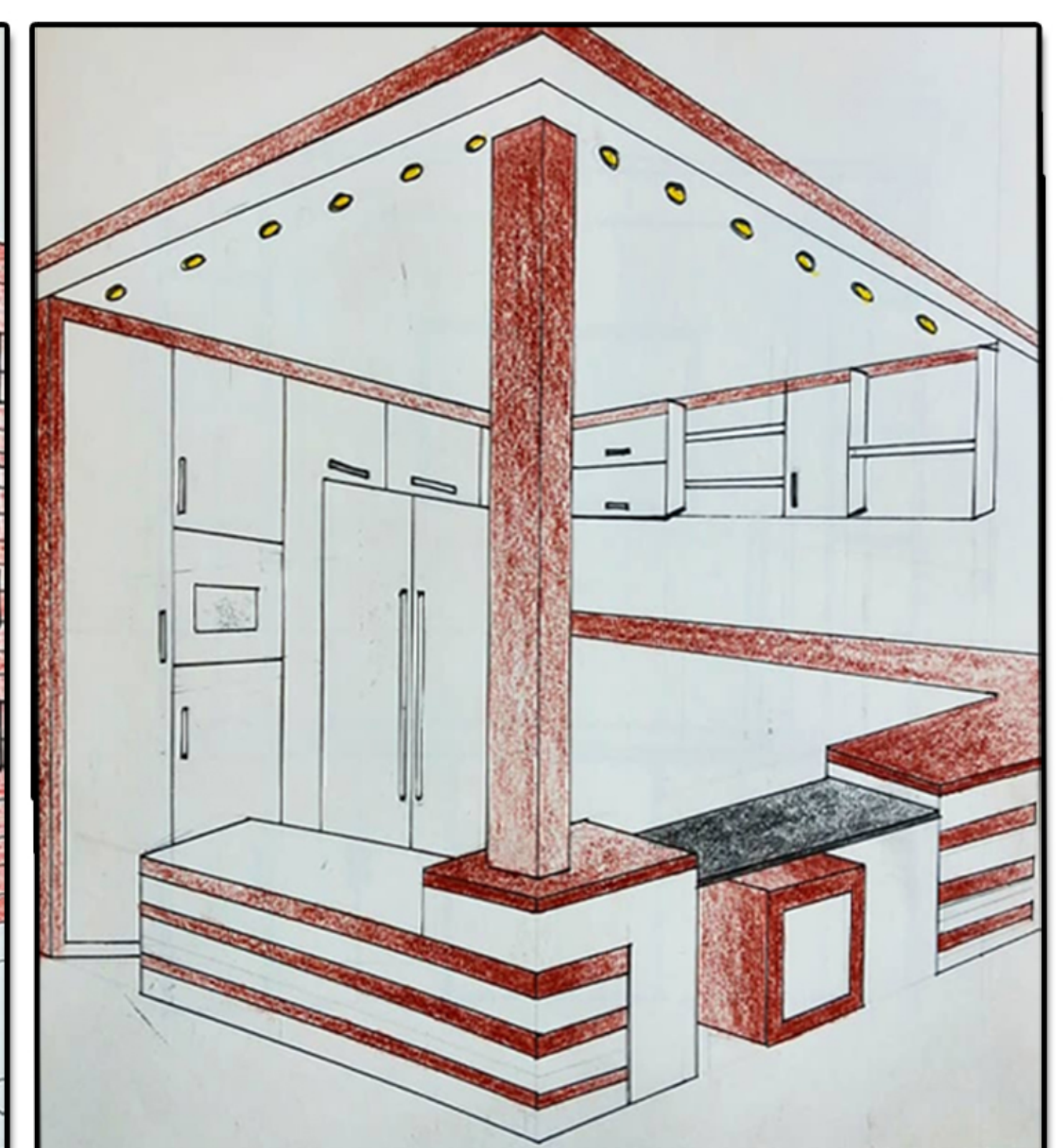
'Nadumuttom' - The traditional interior courtyard



Pillar and Mukhapu Design



Living room wall design



Kitchen isometric view