

USN \_\_\_\_\_

17AU45

**CBCS**  
**IV Semester B.E Degree Examinations June/July 2019**  
**AUTOMOBILE ENGINEERING (AU)**  
**COMPUTER AIDED MACHINE DRAWING**

**Time: 3 Hours**

**Max. Marks: 100**

- Note:** 1. Answer any ONE question from each of the parts A, Band C.  
 2. Use **FIRST ANGLE** projection only.  
 3. Missing data if any may suitably Assumed.  
 4. All the calculations should be on answer sheet supplied.  
 5. All the dimensions are in mm.  
 6. **Part C Assembled View should be in 3D and other 2 views in 2D.**

Sl. No.	Question	Marks
<b>Part A</b>		
Q.No.1	A Triangular pyramid of 30mm sides of base and axis 45mm long is placed with its base on HP such that an edge of the base is parallel to VP and nearer to it. A cutting plane inclined at 60° to HP and perpendicular to VP bisects the axis of the pyramid. Draw the top and add the true shape of the section.	20
Q.No.2	Following Figure.1 shows a machine component. Draw the following views a) Front View b) Top View c) Right side view	20
<p align="center"><b>Fig. 1</b></p>		



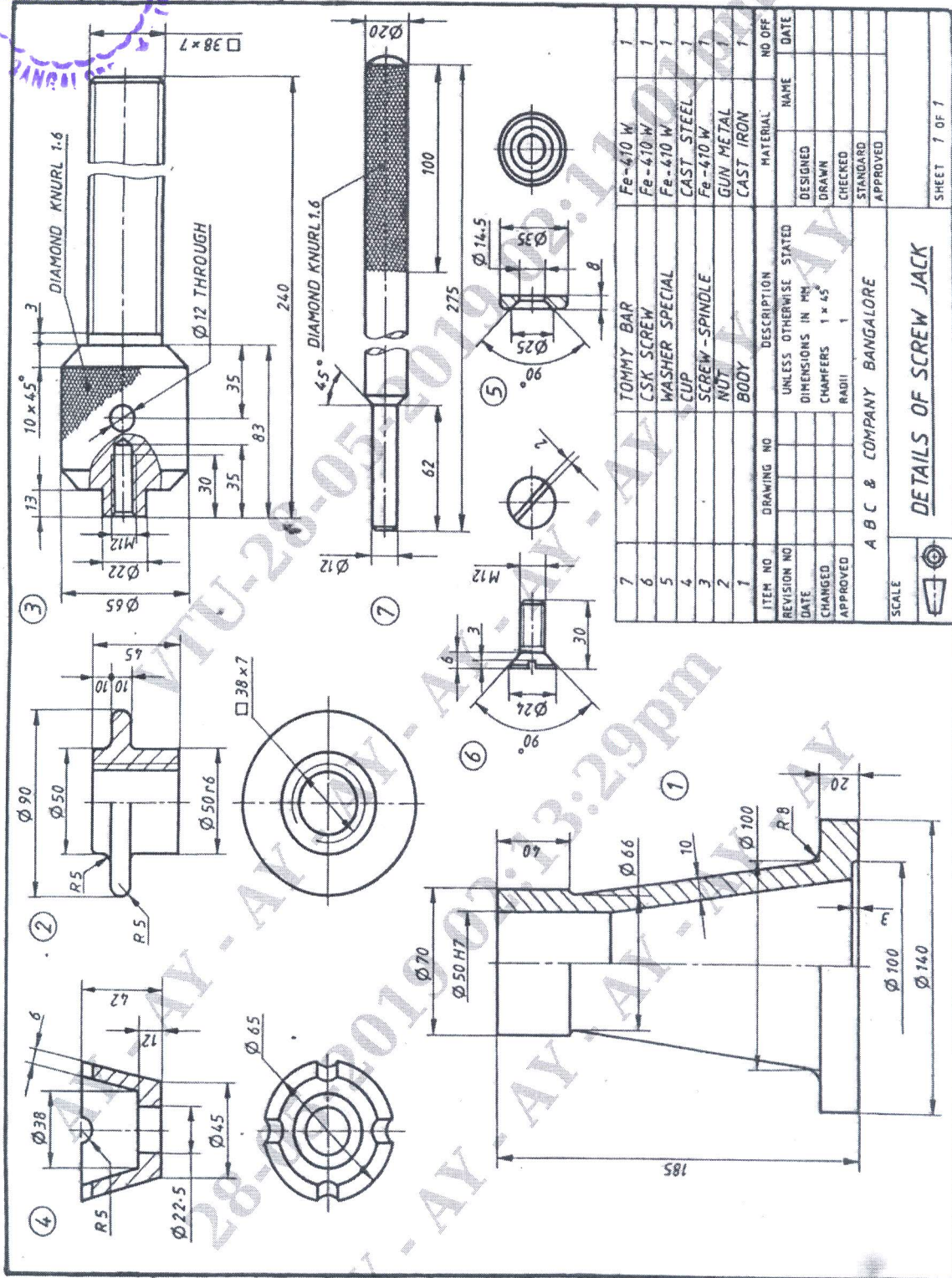
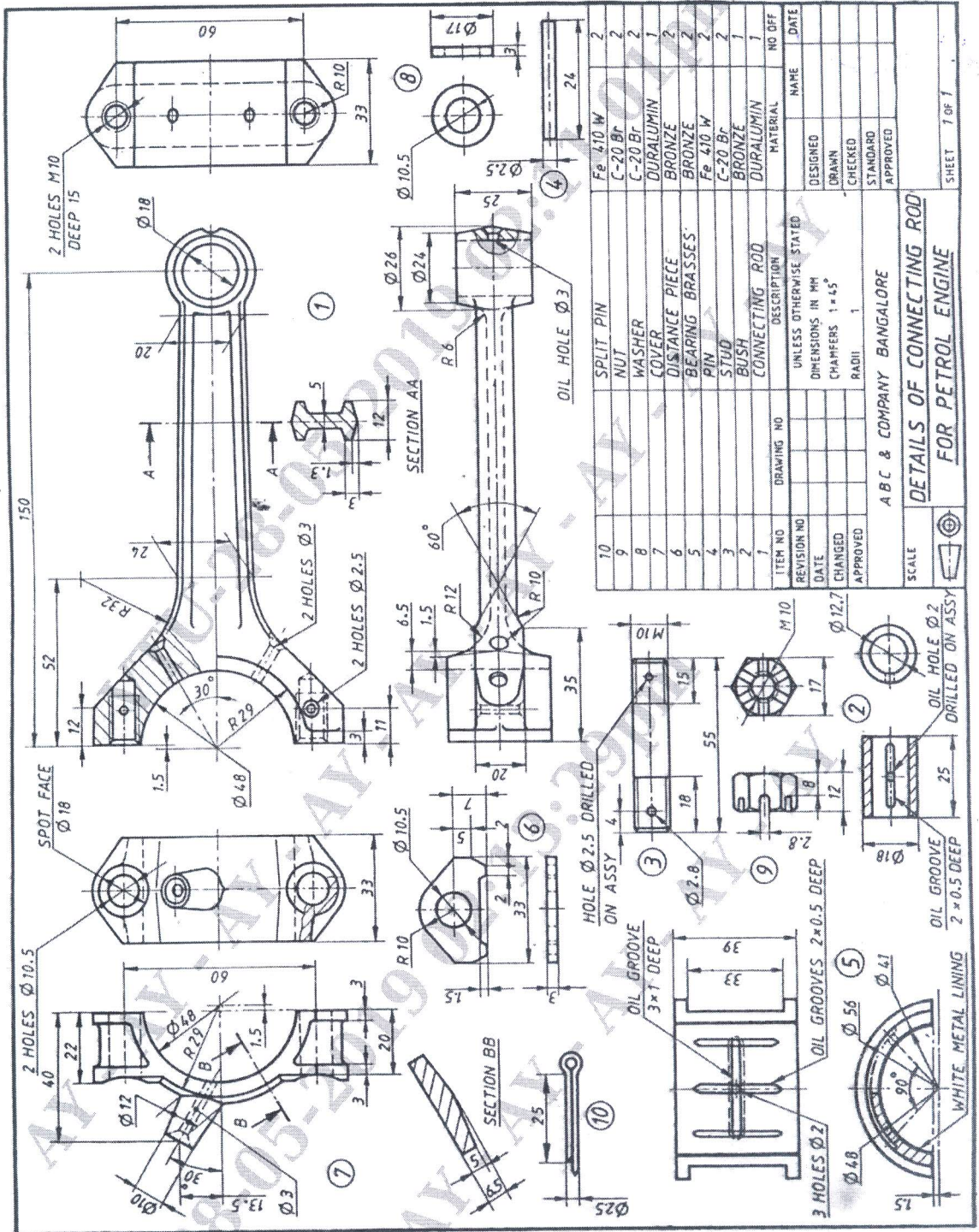


Fig: 2 Details of Screw Jack



Details of Petrol Engine Connecting Rod

Fig. 3 Details of Connecting Rod