

CBCS SCHEME

17AU45

IV Semester B.E Degree Examinations June/July 2019

AUTOMOBILE ENGINEERING (AU)

COMPUTER AIDED MACHINE DRAWING

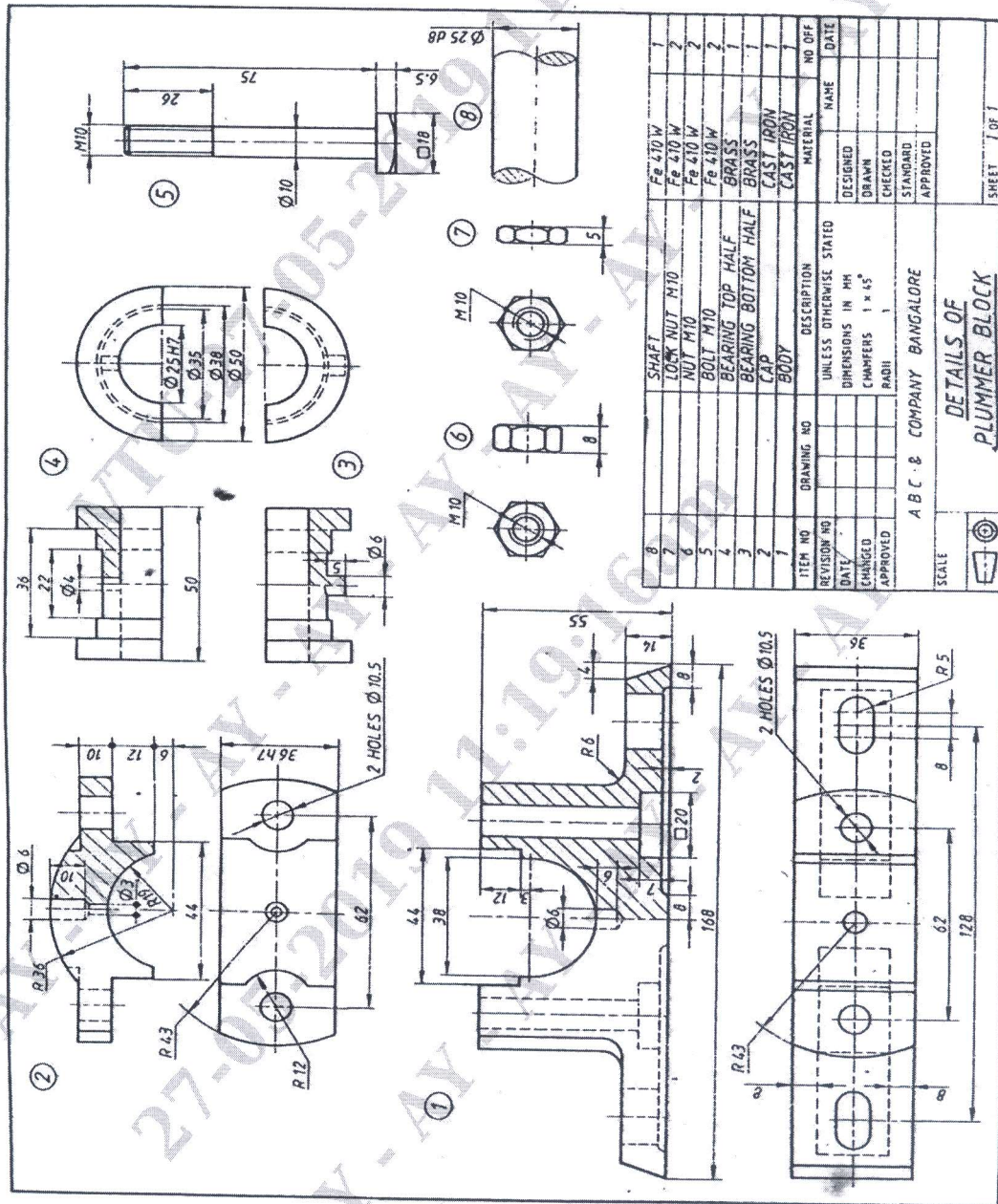
Time: 3 Hours

Max. Marks: 100

- Note:** 1. Answer any ONE question from each of the parts A, Band C.
2. Use **FIRST ANGLE** projection only.
3. Missing data if any may suitably Assumed.
4. All the calculations should be on answer sheet supplied.
5. All the dimensions are in mm.
6. **Part C Assembled View should be in 3D and other 2 views in 2D.**

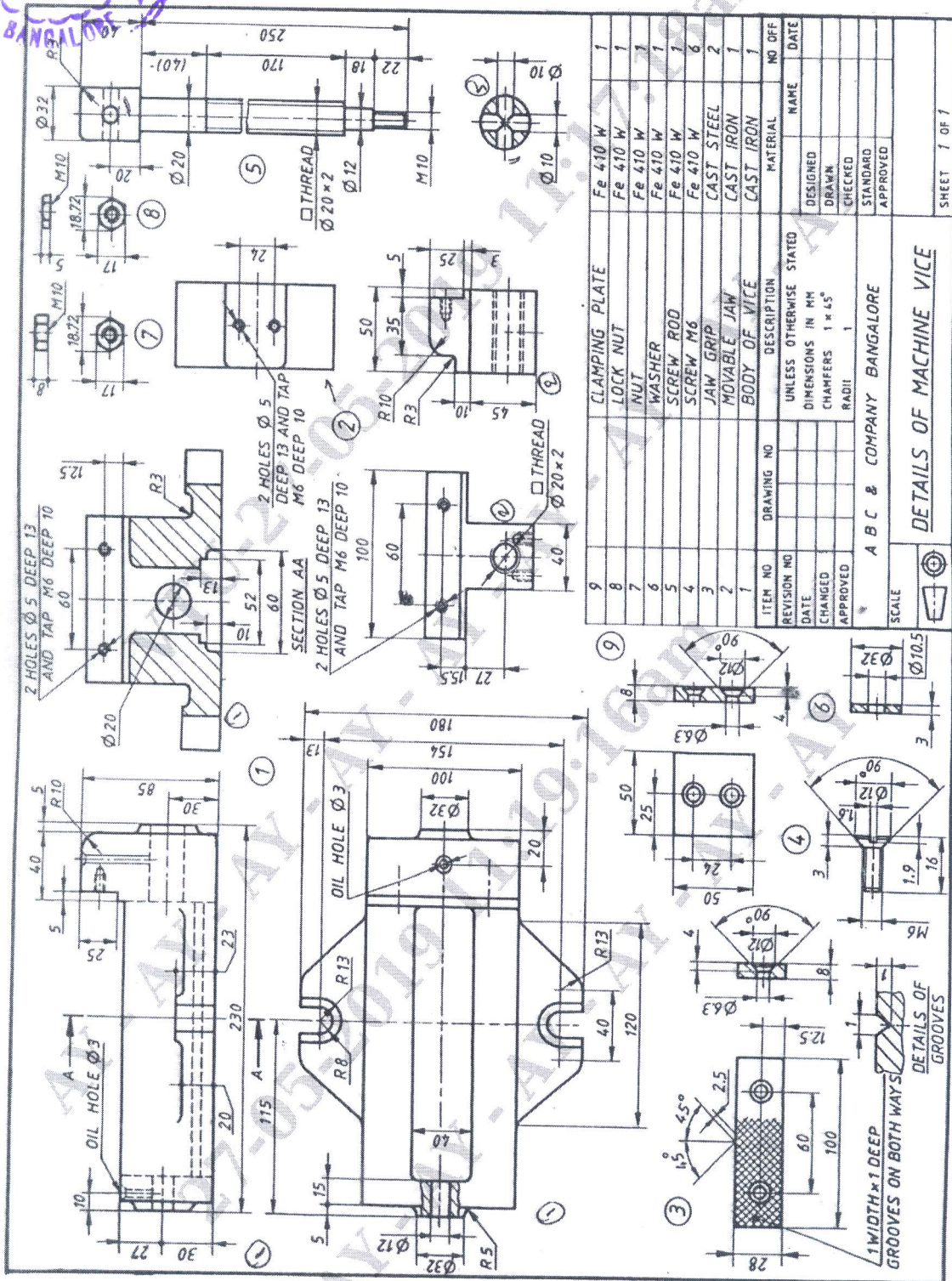
Sl. No.	Question	Marks
PART A		
Q.No.1	A cube of 30mm sides rest with one of its square faces on HP such that one of its vertical square faces is inclined at 30° to VP. A section plane perpendicular to VP and inclined at 60° to HP passes through a point on the vertical axis 5mm below its top end. Draw its sectional top view, front view and the true shape of the section.	20
Q.No.2	Draw the two Views of Square Headed Bolt M25 × 100 and a thread length of 60 mm with a hexagonal nut. Indicate all the proportions and actual dimensions	20
PART- B		
Q.No.3	Sketch sectional front and top views of the double riveted Zig-Zag butt joint with double straps, taking t = 10 mm. Indicate dimensions.	20
Q.No.4	Draw sectional Front View and a view looking from socket end of a SOCKET and SPIGOT COTTER JOINT used for joining used two rods of diameter 20mm. Indicate dimensions.	20

PART- C		
Q.No.5	Draw a Half sectional front view and top of a Plumber block assembly (Fig: 1)	60
Q.No.6	Details of MACHINE VICE are shown in the following Figure 2. Assemble the parts and draw the following views. a) Sectional front view b) Top view	60



Details of a Plummer Block

Fig: 1 Details of Plummer Block



Details of a Machine Vice

Fig: 2 Details of Machine Vice