

USN									
-----	--	--	--	--	--	--	--	--	--

**Fourth Semester B.E. Degree Examination, December 2019**  
**(Automobile Engineering)**

**COMPUTER AIDED MACHINE DRAWING**

Time: 3 Hours

Max. Marks: 80

- Note:** 1. Answer any ONE question from each of the parts A, B and C.  
 2. Use **FIRST ANGLE** projection only.  
 3. Missing data if any may suitably be assumed.  
 4. All the calculations should be on answer sheet supplied.  
 5. All the dimensions are in mm.  
 6. **Part C Assembled View should be in 3D and other 2 views in 2D.**

**PART - A**

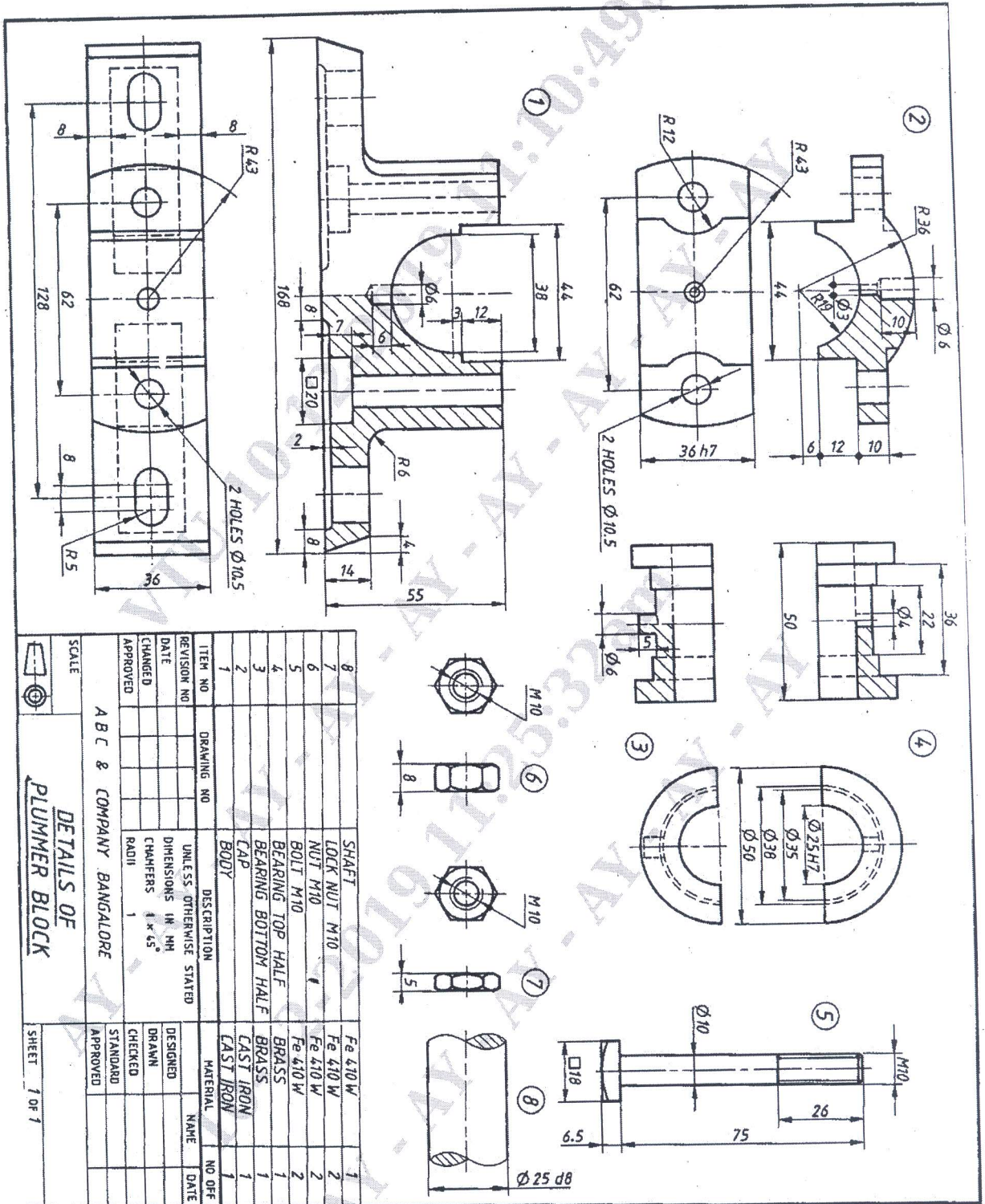
- Q.No.1** Draw the following profiles  
 a) BSW thread having pitch of 50mm b) ACME thread of pitch 60mm. **(15 Marks)**
- Q.No.2** Draw two views of square headed bolt with nut for a 30mm diameter. Take length of the bolt equal to 125mm. **(15 Marks)**

**PART - B**

- Q.No.3** Draw the top view and sectional front view of single riveted butt joint with single cover plate. The thickness of the plate is 9mm. Show at least 3 rivets in each row. **(15 Marks)**
- Q.No.4** Draw the sectional front view of a knuckle joint to connect two shafts of diameter 30mm. Indicate dimensions. **(15 Marks)**

**PART - C**

- Q.No.5** Following figure 1 shows the details of Plummer block. Assemble the parts of Plummer block and draw i) Front view in half section ii) top view. **(50 Marks)**
- Q.No.6** Details of IC engine piston are shown in figure 2. Assemble the parts and draw the following views. i) Sectional front view ii) Top view. **(50 Marks)**



ITEM NO	DRAWING NO	DESCRIPTION	MATERIAL	NO OFF
1		BODY	CAST IRON	1
2		CAP	BRASS	1
3		BEARING BOTTOM HALF	BRASS	1
4		BEARING TOP HALF	BRASS	1
5		BOLT M10	Fe 410 W	2
6		LOCK NUT M10	Fe 410 W	2
7		SHAFT	Fe 410 W	1
8		UNLESS OTHERWISE STATED		

REVISION NO	DATE	CHANGED	APPROVED	DESIGNED	DRAWN	CHECKED	STANDARD	APPROVED

SCALE:

ABC & COMPANY BANGALORE

DETAILS OF PLUMMER BLOCK

SHEET 1 OF 1

Figure 1

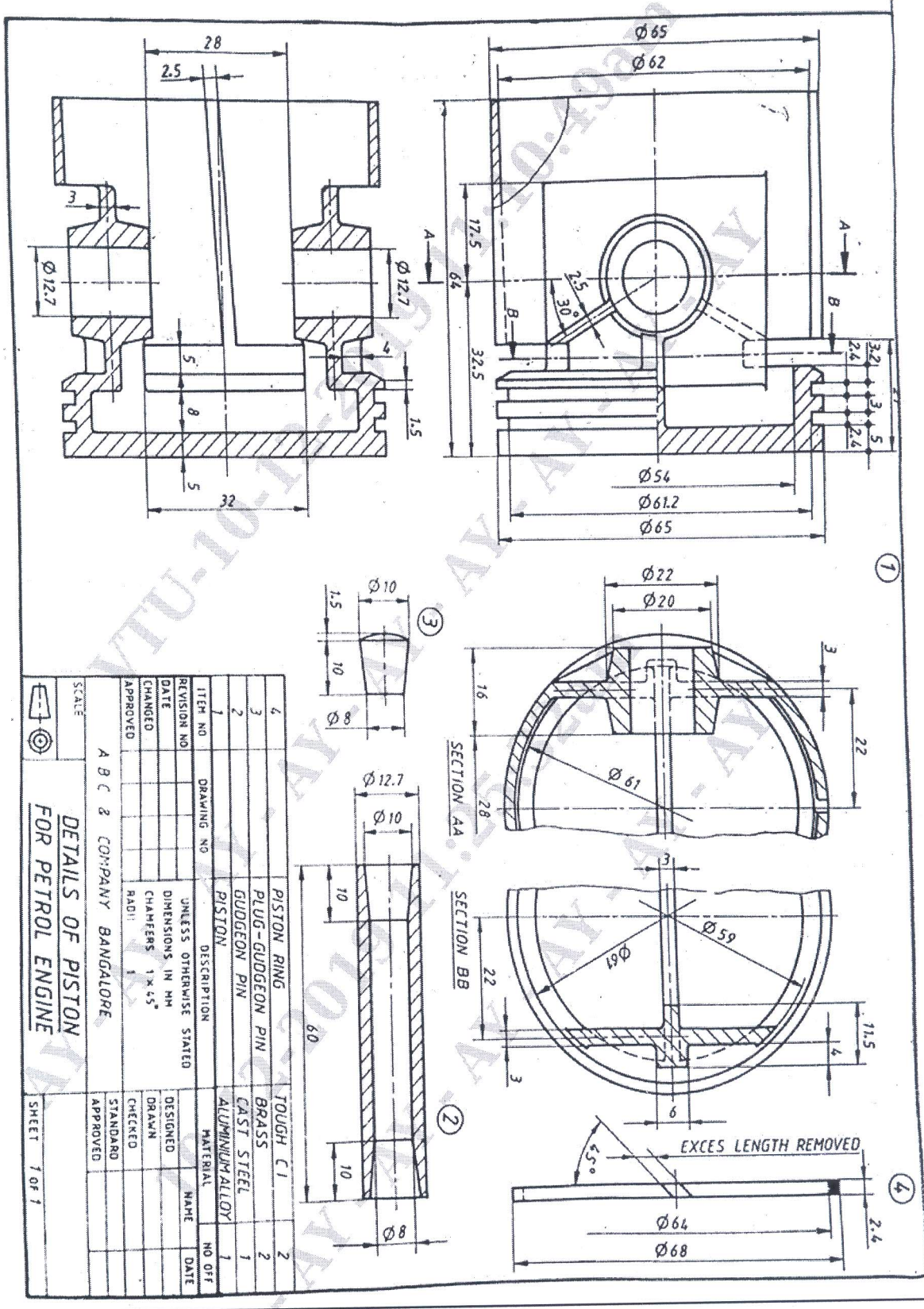


Figure 2