



--	--	--	--	--	--	--	--	--	--	--	--

Fifth Semester B.E. Degree Examination, December 2019
(CIVIL ENGINEERING)

COMPUTER AIDED BUILDING PLANNING AND DRAWING

Time: 3 Hours

Max. Marks: 100

- Note: 1. Answer any *TWO* full questions as per INTERNAL CHOICE.
2. Assume any missing data suitably.

Q1. Draw Plan, sectional Elevation and cross section of a slab type combined footing with given details.

Size of column=(450x450)mm

Size of Footing=(2.2x4.2)m

Depth of footing=600mm

Centre to centre distance between the column=2m

Thickness of PCC bed in 1:3:6=100mm

Column reinforcement details: Longitudinal steel of #8-20 ϕ with lateral ties of 2L 8 ϕ @200c/c

Footing Reinforcement details: Bottom reinforcement of 12 ϕ @ 100c/c both ways and Top reinforcement of 12 ϕ @ 150c/c both ways

(40 Marks)

OR

Q2. Draw the Cross section of a Divided Highway in urban area having width of pavement 10.5m, footpath:3m, cycle track: 3.8m, reserve space 1.2 m , area separator or divider 6m i.e width.

(40 Marks)

Q3. Line diagram of Single Storey residential building is given in figure Q3(a). Draw to scale the following:

- Electrical Services
- Plumbing and Sanitary Services

(60 Marks)

OR

Q4. Line diagram of Single Storey residential building is given in figure Q4(a). Draw to scale the following:

- Plan at sill
- Front elevation
- Section along AA.
- Schedule of Openings

(60 Marks)

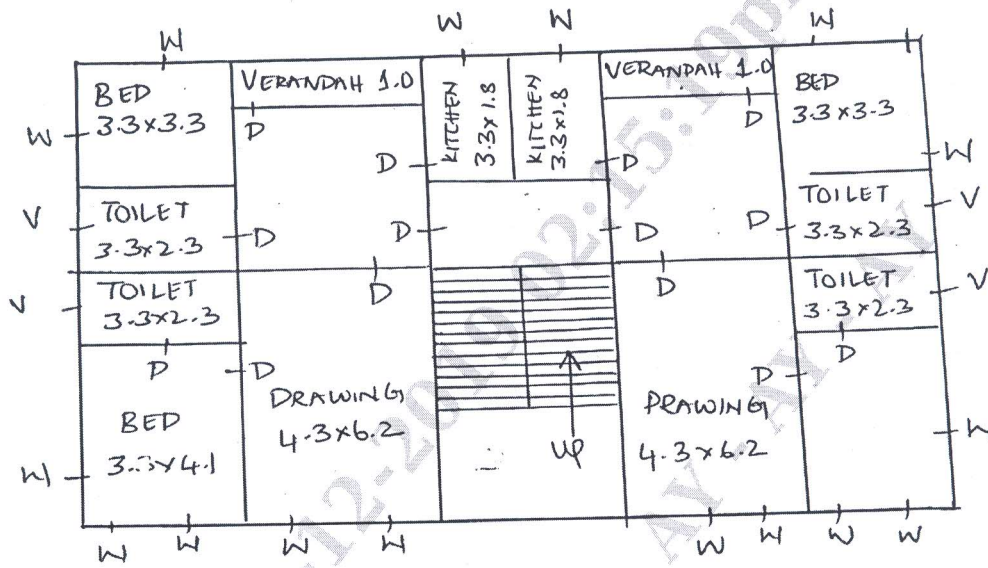


Fig 3(a)

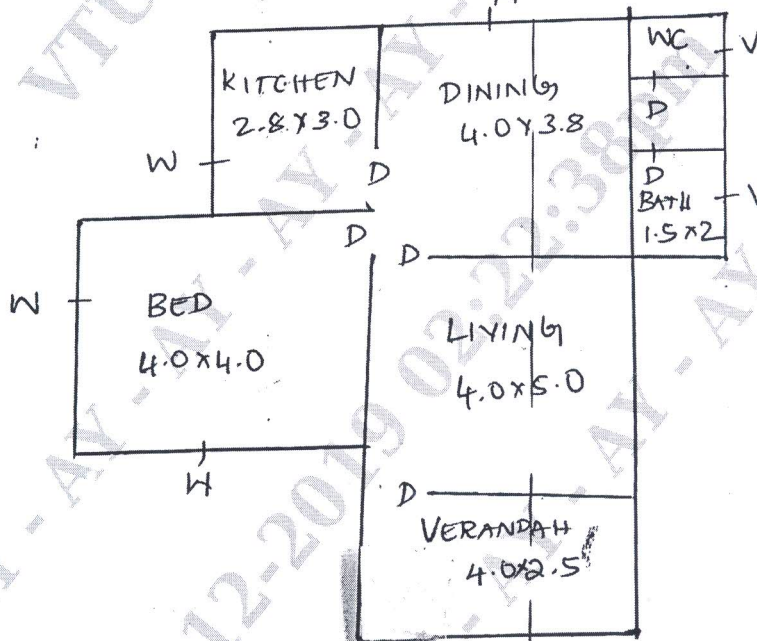


Fig 4(a)