

# CBCS SCHEME

USN

--	--	--	--	--	--	--	--

15EC34

## Third Semester B.E. Degree Examination, Aug./Sept.2020 Network Analysis

Time: 3 hrs.

Max. Marks: 80

*Note: Answer any FIVE full questions, choosing ONE full question from each module.*

### Module-1

- 1 a. Reduce the circuit shown in Fig.Q1(a) into single voltage source with series resistance between terminals A and B.

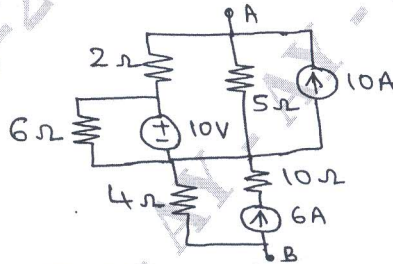


Fig.Q1(a)

(06 Marks)

- b. Using Mesh analysis, find the current  $I_1$  for the circuit shown in Fig.Q1(b).

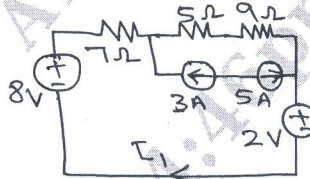


Fig.Q1(b)

(06 Marks)

- c. Explain the concept of Super node. (04 Marks)

OR

- 2 a. Determine the resistance between terminals A and B of the circuit shown in Fig.Q2(a) using Star to Delta conversion.

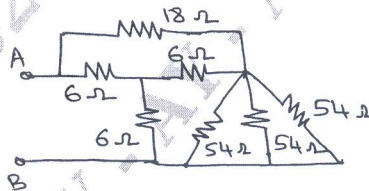


Fig.Q2(a)

(06 Marks)

- b. Using Nodal analysis, find the value of  $V_x$  in the circuit shown in Fig.Q2(b), such that the current through  $(2 + j3)\Omega$ . Impedance is zero.

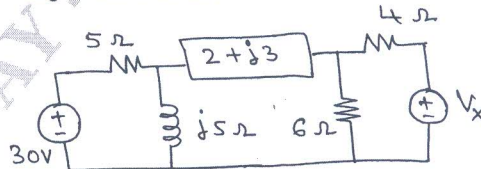


Fig.Q2(b)

(06 Marks)

- c. Explain the Dependent sources. (04 Marks)

Important Note : 1. On completing your answers, compulsorily draw diagonal cross lines on the remaining blank pages.  
2. Any revealing of identification, appeal to evaluator and /or equations written eg, 42+8 = 50, will be treated as malpractice.

**Module-2**

- 3 a. For the circuit shown in Fig.Q3(a), find the current through 20 Ω resistor using super position theorem.

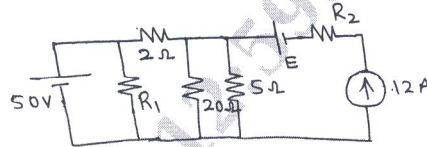


Fig.Q3(a)

(08 Marks)

- b. For ac circuits, prove that the maximum power deliver to load is  $\frac{(V_{th})^2}{8R_{th}}$ , where  $V_{th}$  – Thevenin’s equivalent voltage and  $R_{th}$  – Thevenin’s equivalent resistance.

(08 Marks)

**OR**

- 4 a. State the Millman’s theorem. Using Millman’s theorem, determine the current through  $(2+j2)\Omega$  impedance for the network shown in Fig.Q4(a).

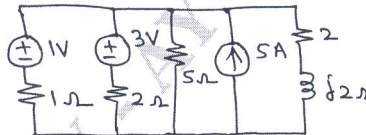


Fig.Q4(a)

(08 Marks)

- b. State the Thevenin’s Theorem and obtain the Thevenin’s equivalent circuit for the circuit shown in Fig.Q4(b).

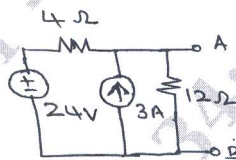


Fig.Q4(b)

(08 Marks)

**Module-3**

- 5 a. Explain the behavior of a inductor and capacitor under switching conditions in detail. (08 Marks)
- b. The switch is changed from position to position 2 at  $t = 0$ . Steady State condition have been reached in position 1. Find the value  $i$ ,  $\frac{di}{dt}$  and  $\frac{d^2i}{dt^2}$  at  $t = 0^+$  for the circuit shown in Fig.Q5(b).

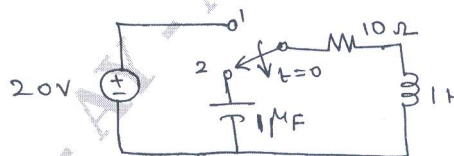


Fig.Q5(b)

(08 Marks)

**OR**

- 6 a. Find the Laplace of  $f(t)$  shown in Fig.Q6(a).

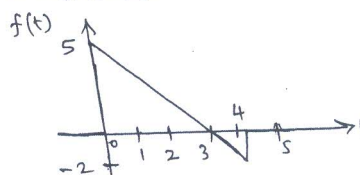


Fig.Q6(a)

(08 Marks)