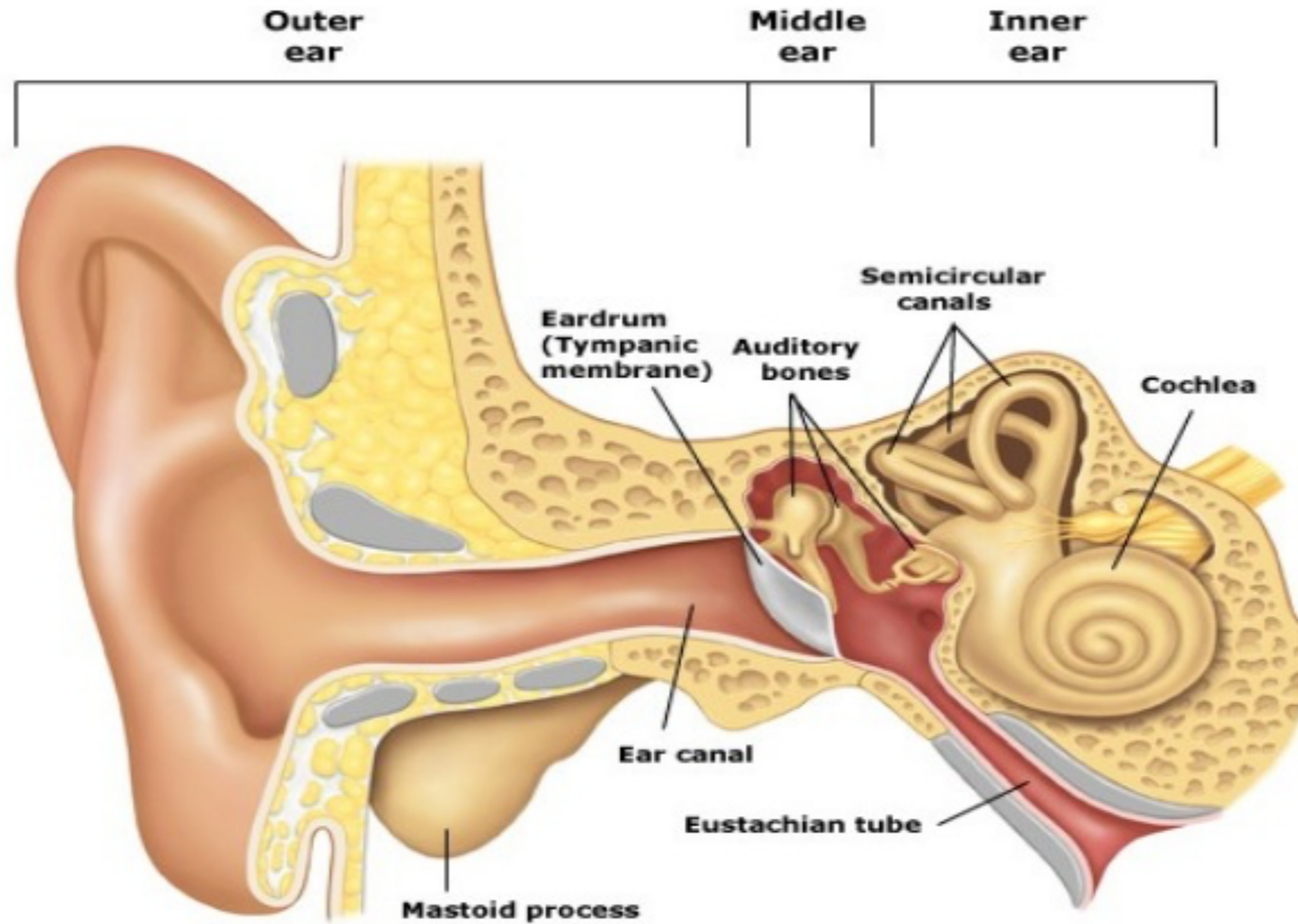


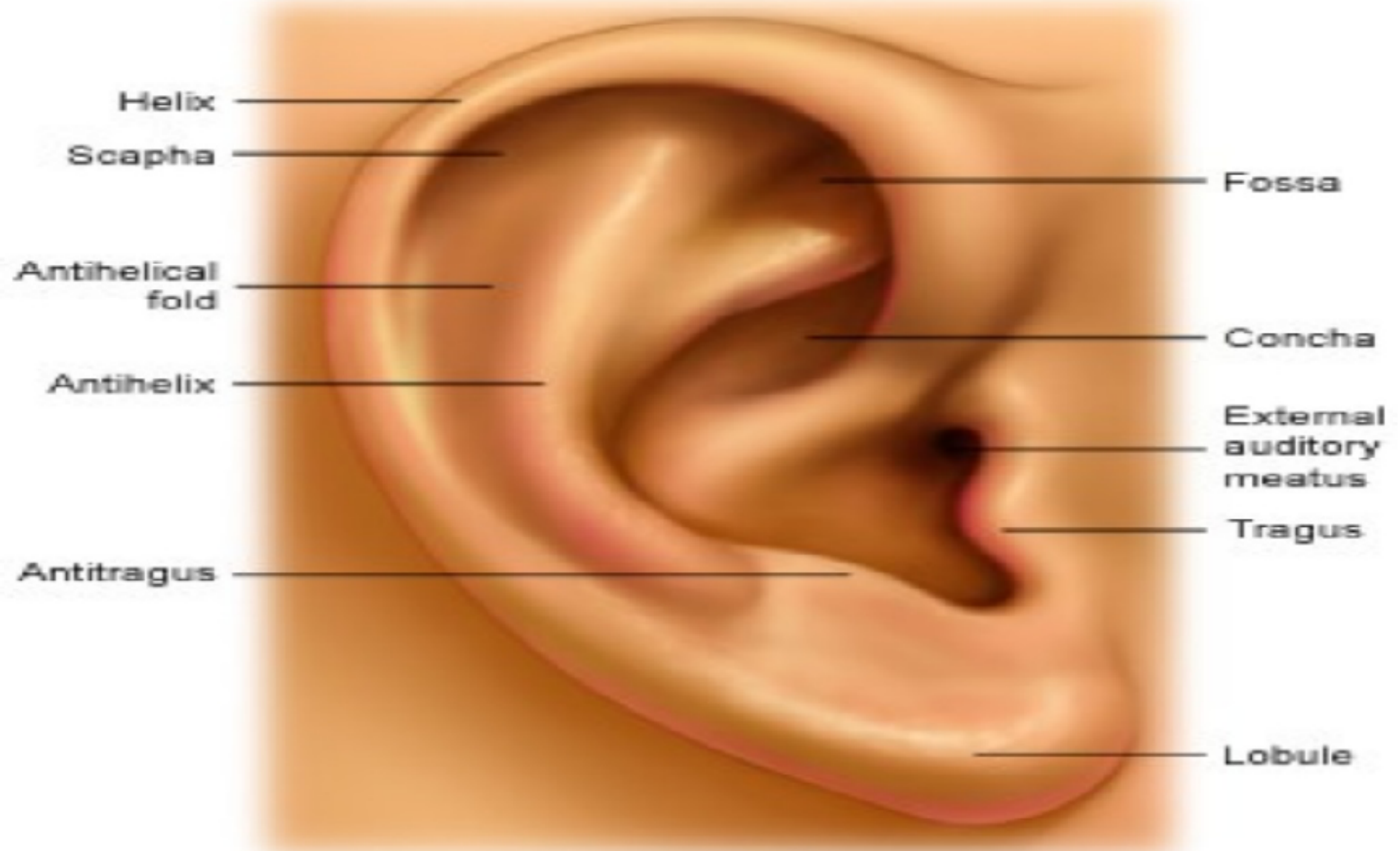
EAR

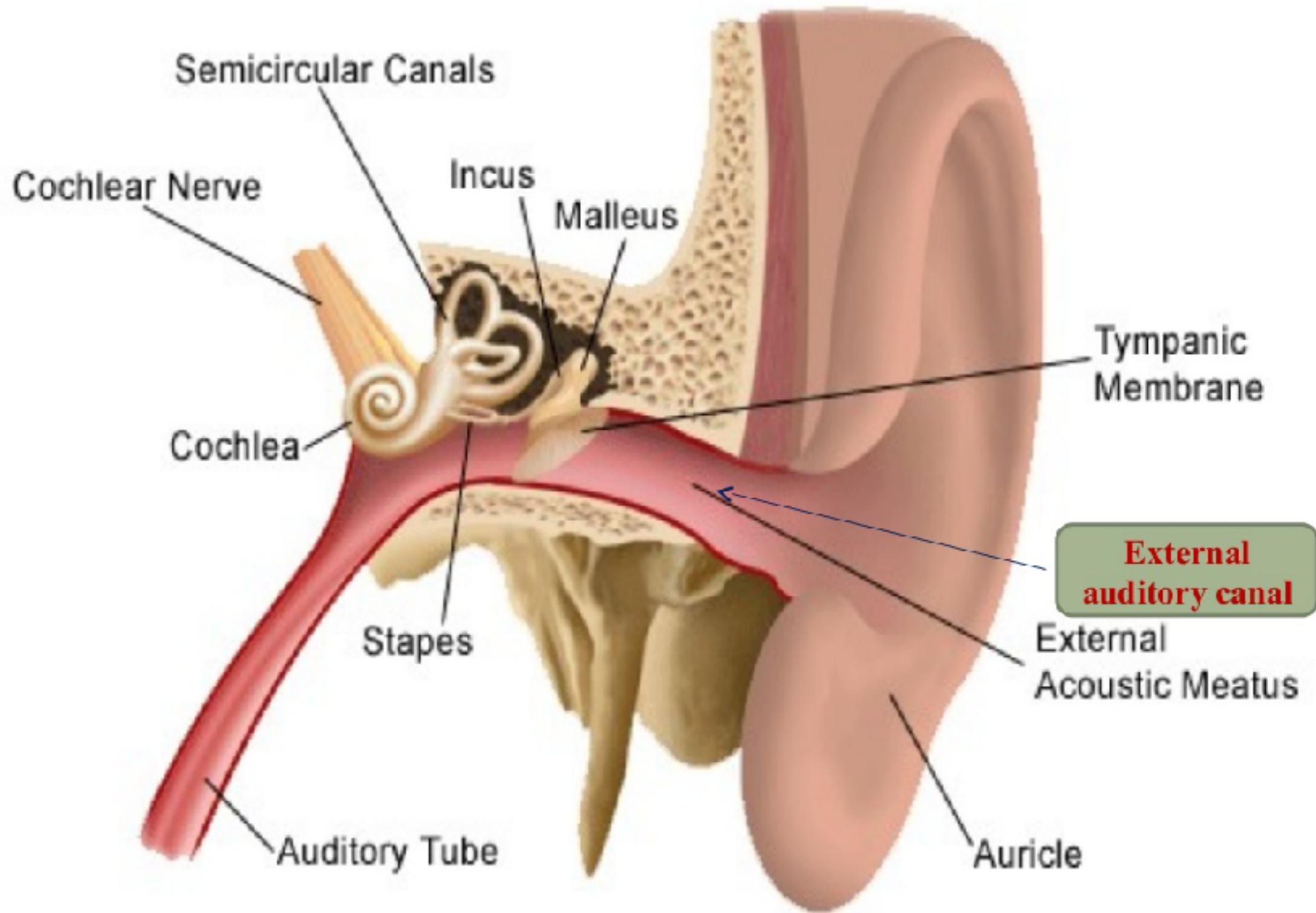
PREPARED BY
Dr.JUSTIN JEYA AMUTHA

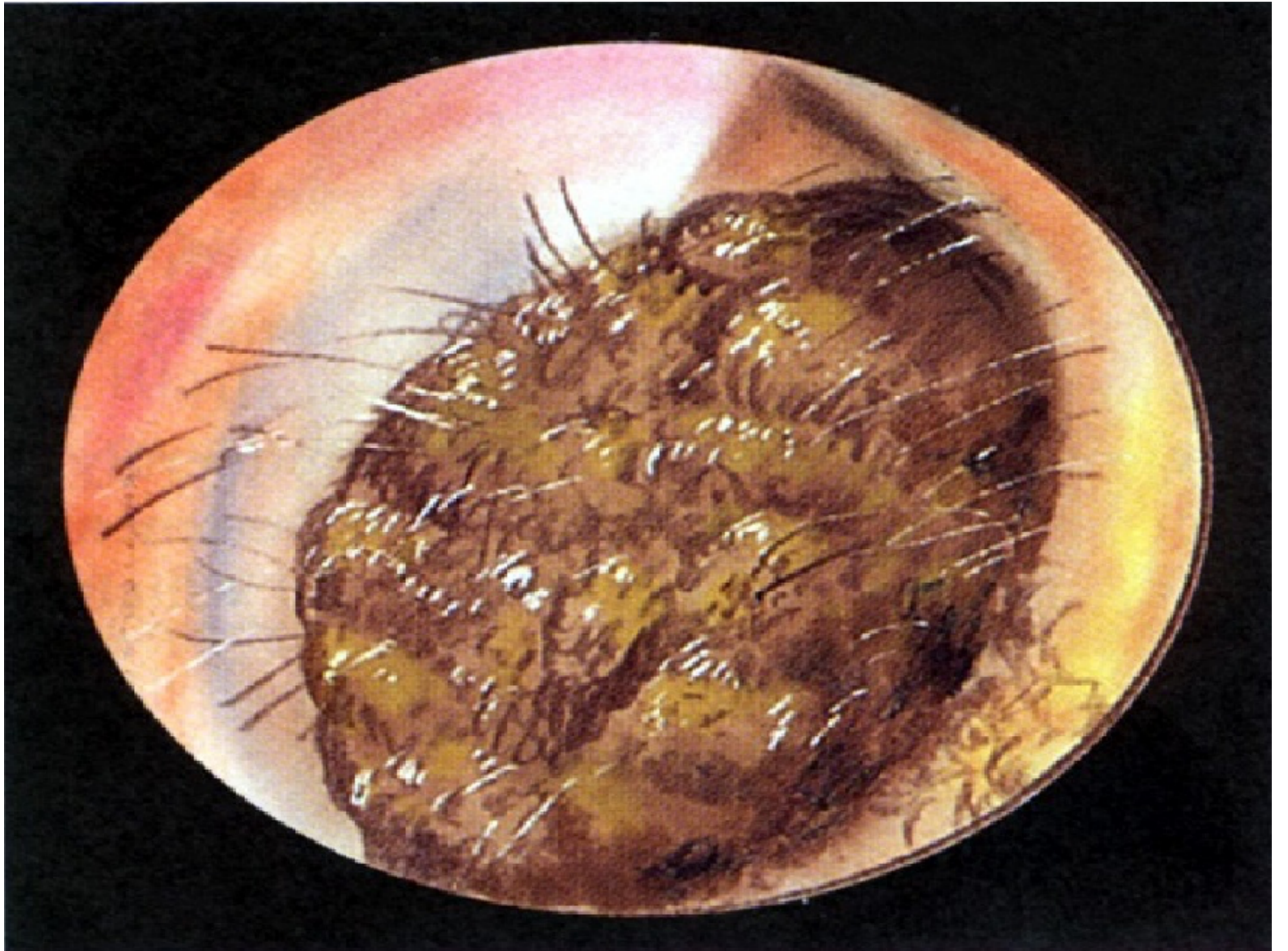
PARTS OF EAR



Auricle/pinna:

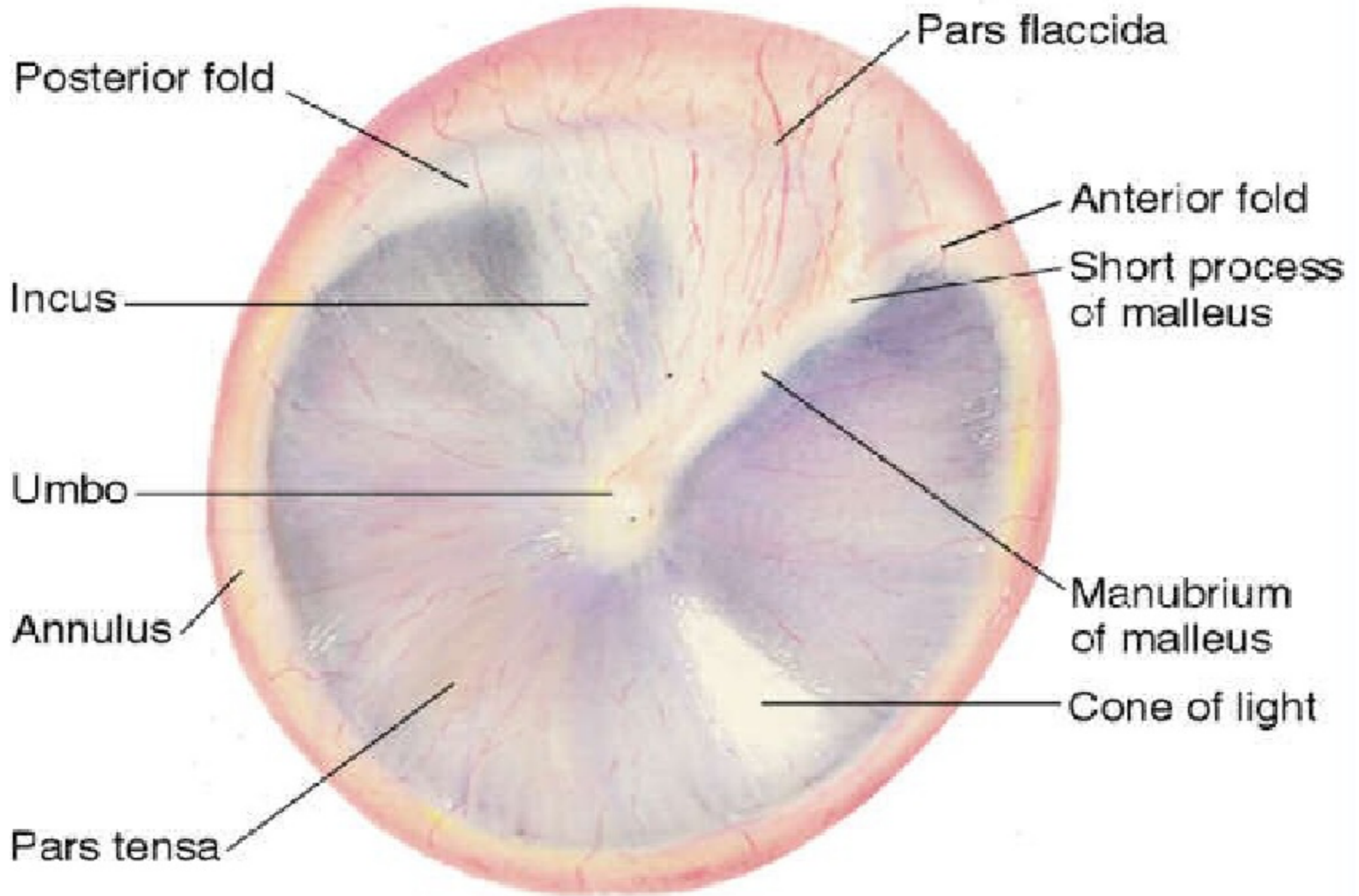




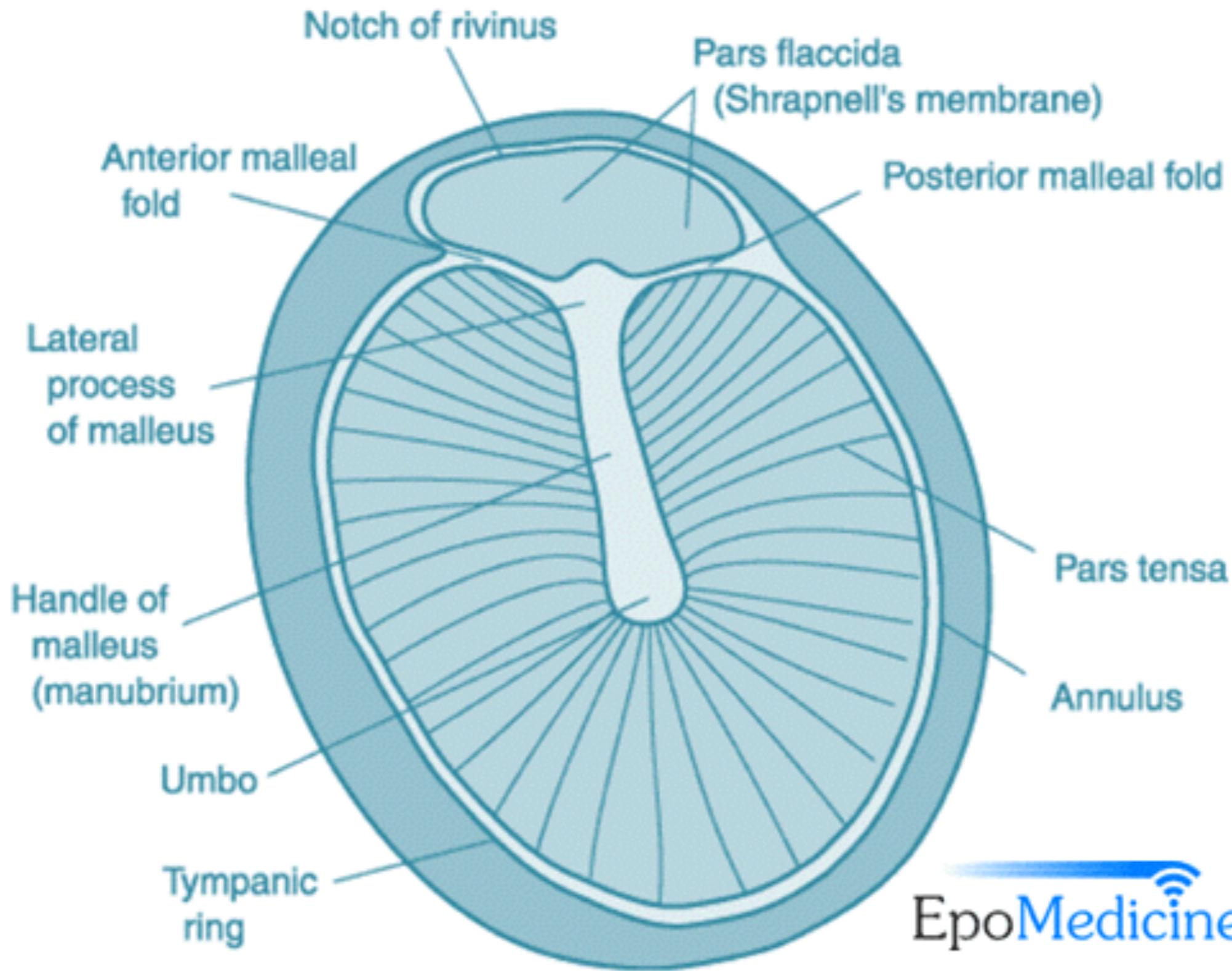


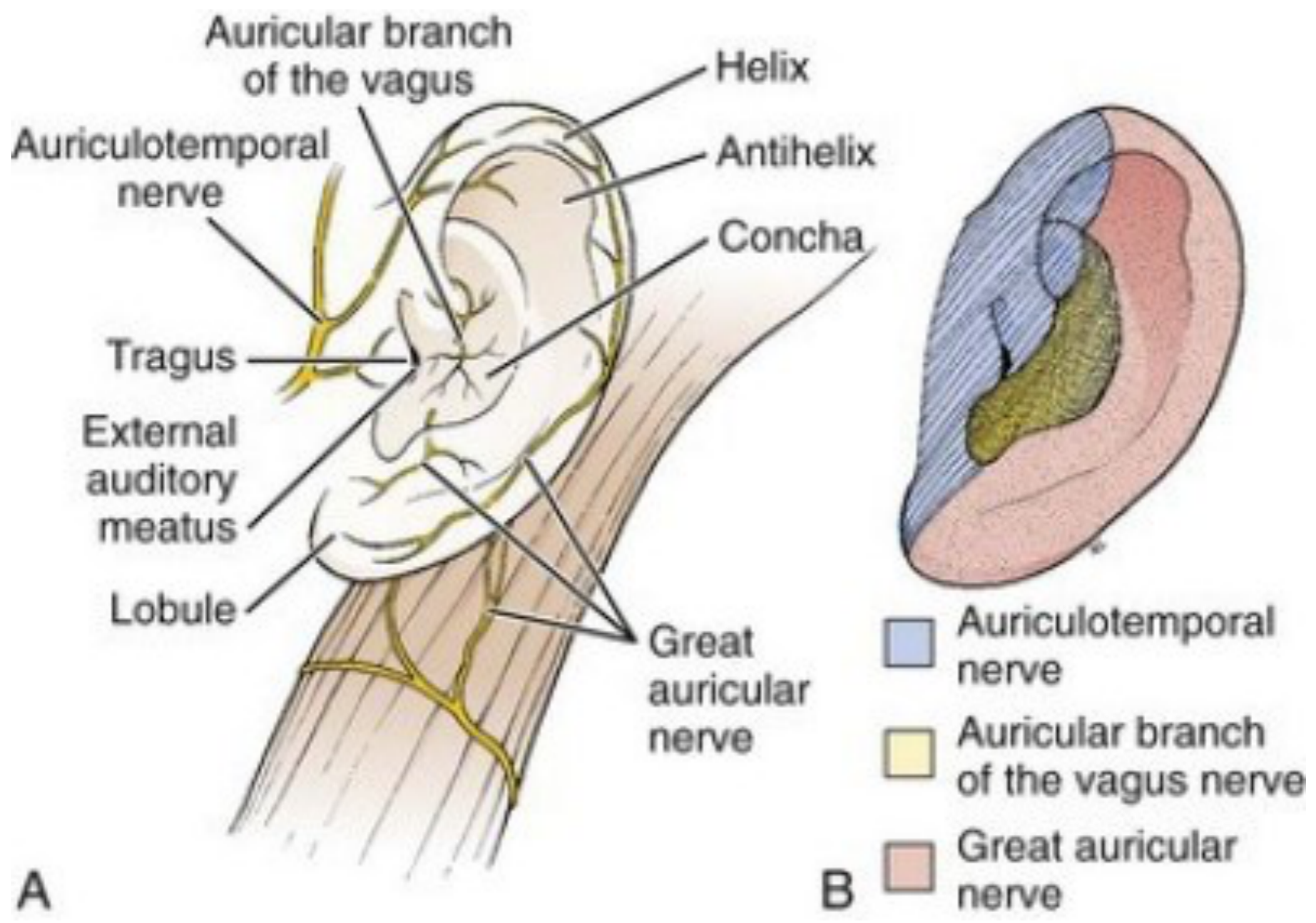
Eustachian Tube



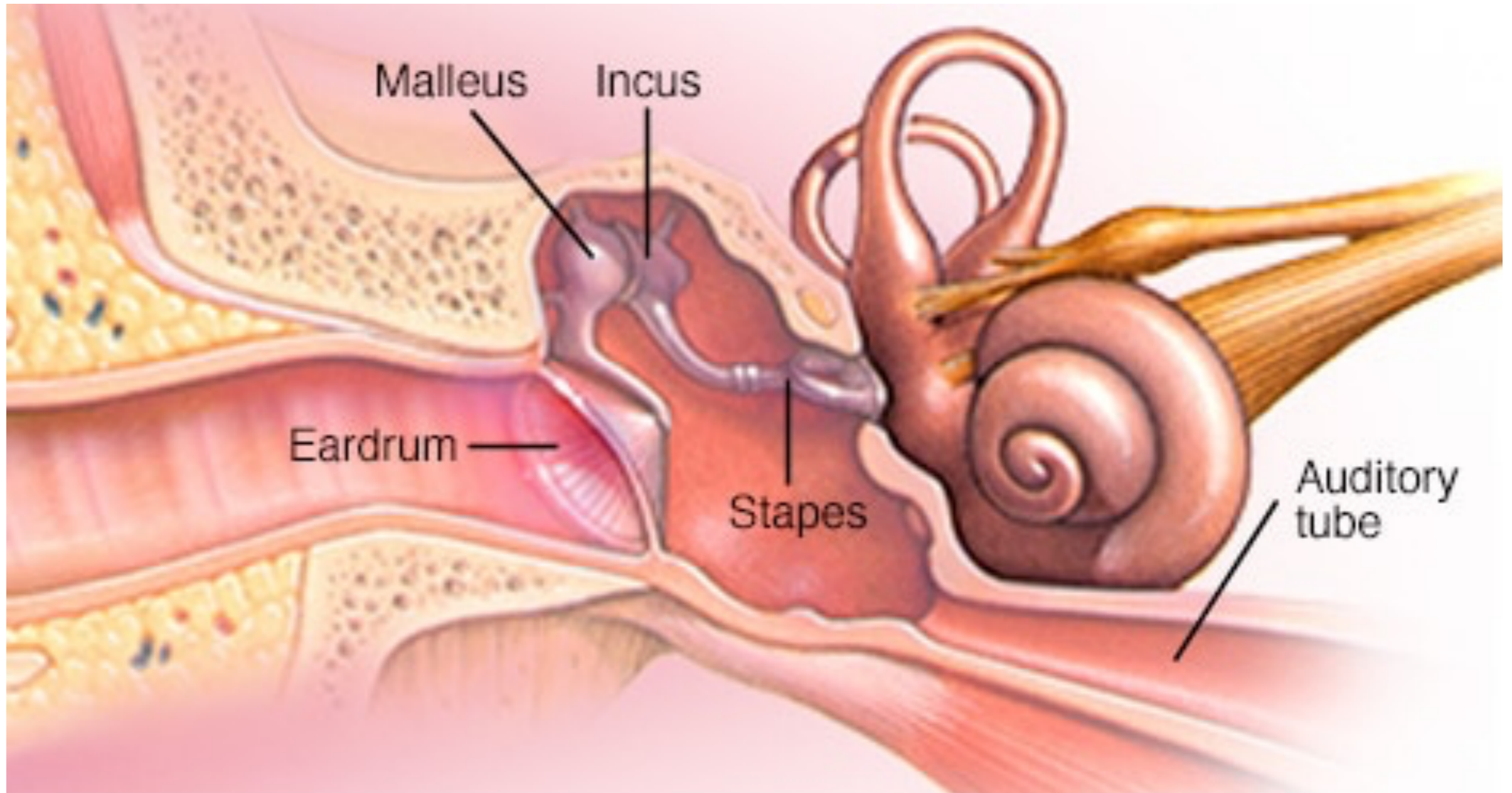


TYMPANIC MEMBRANE

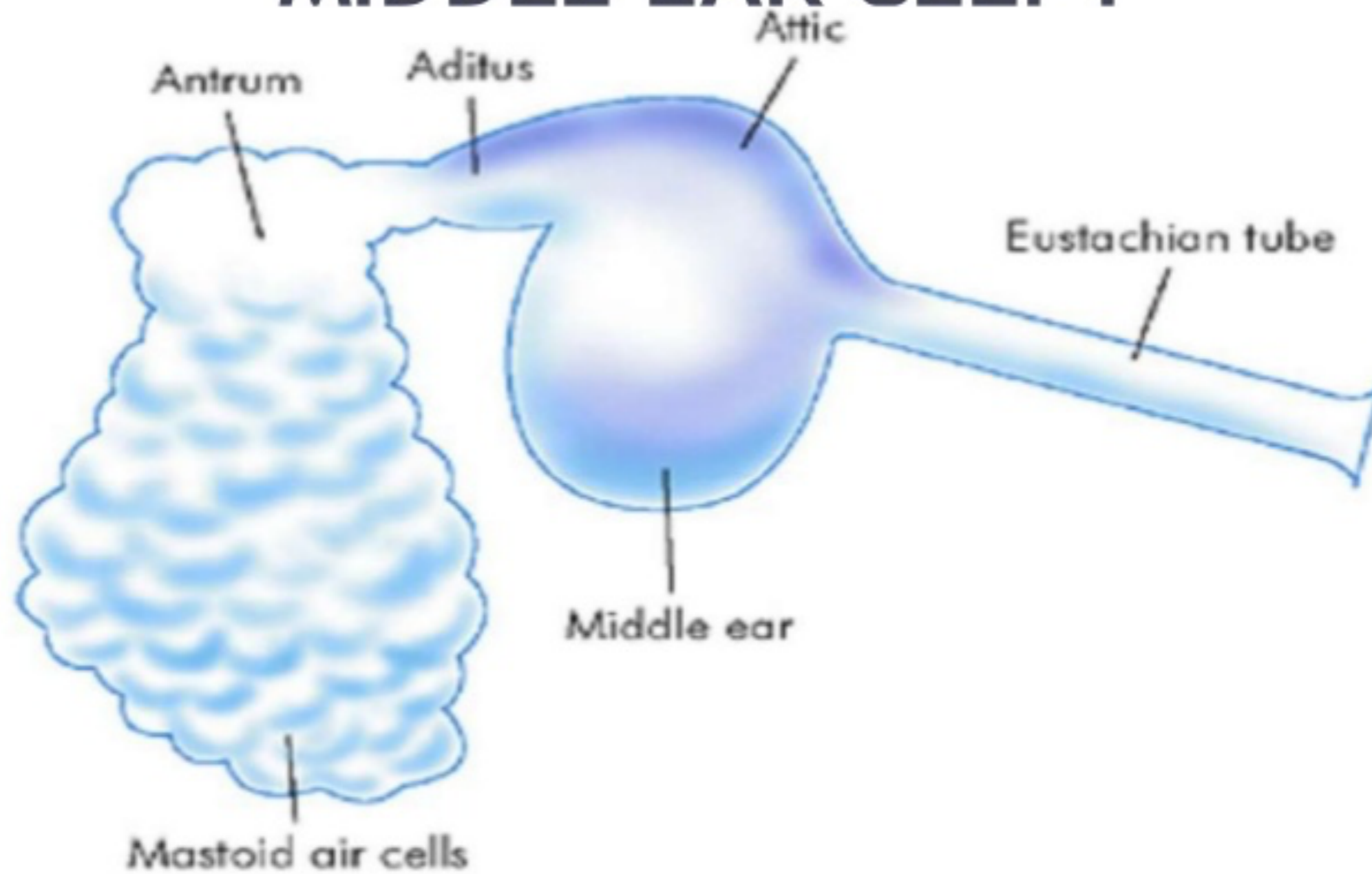


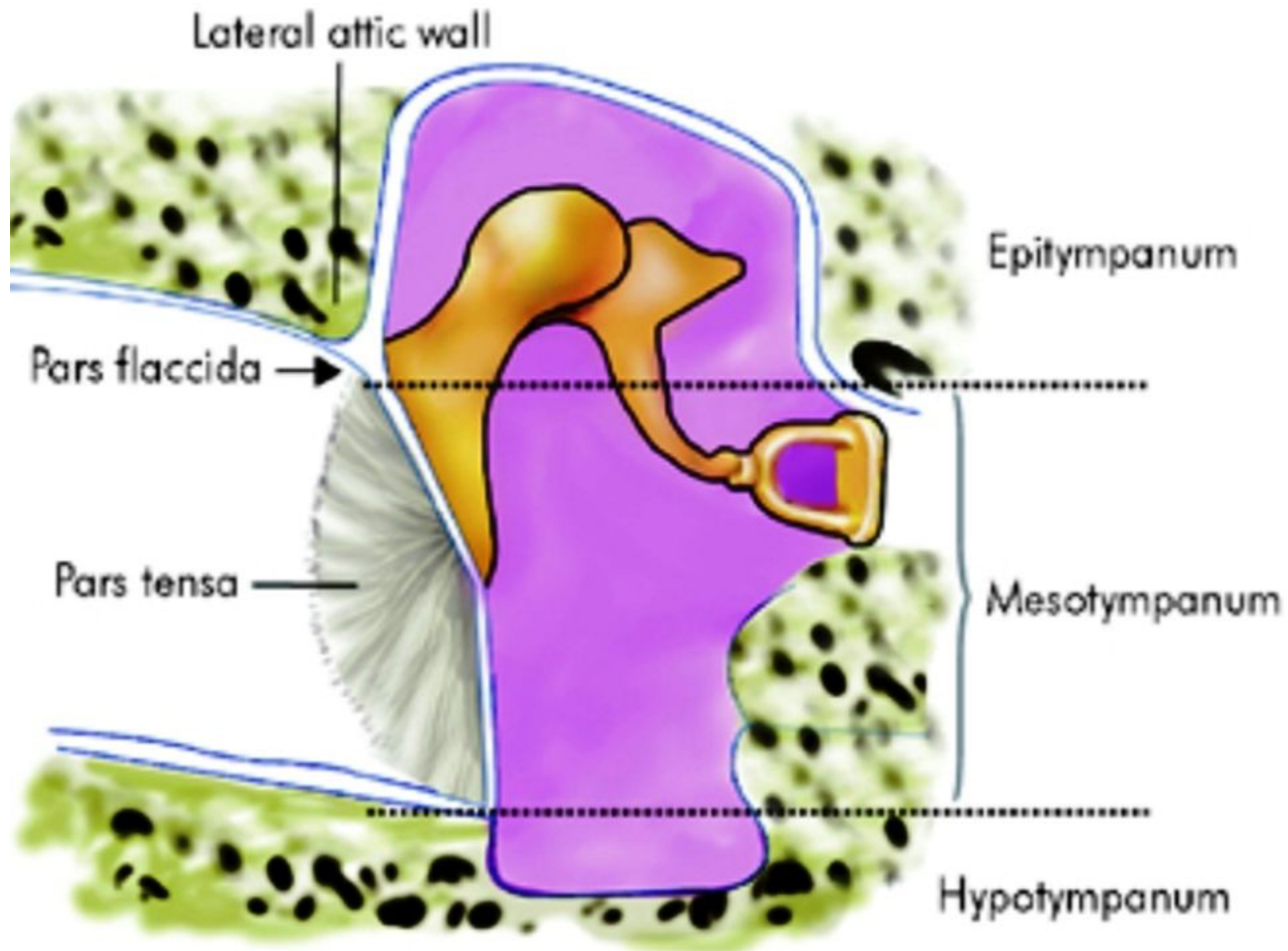


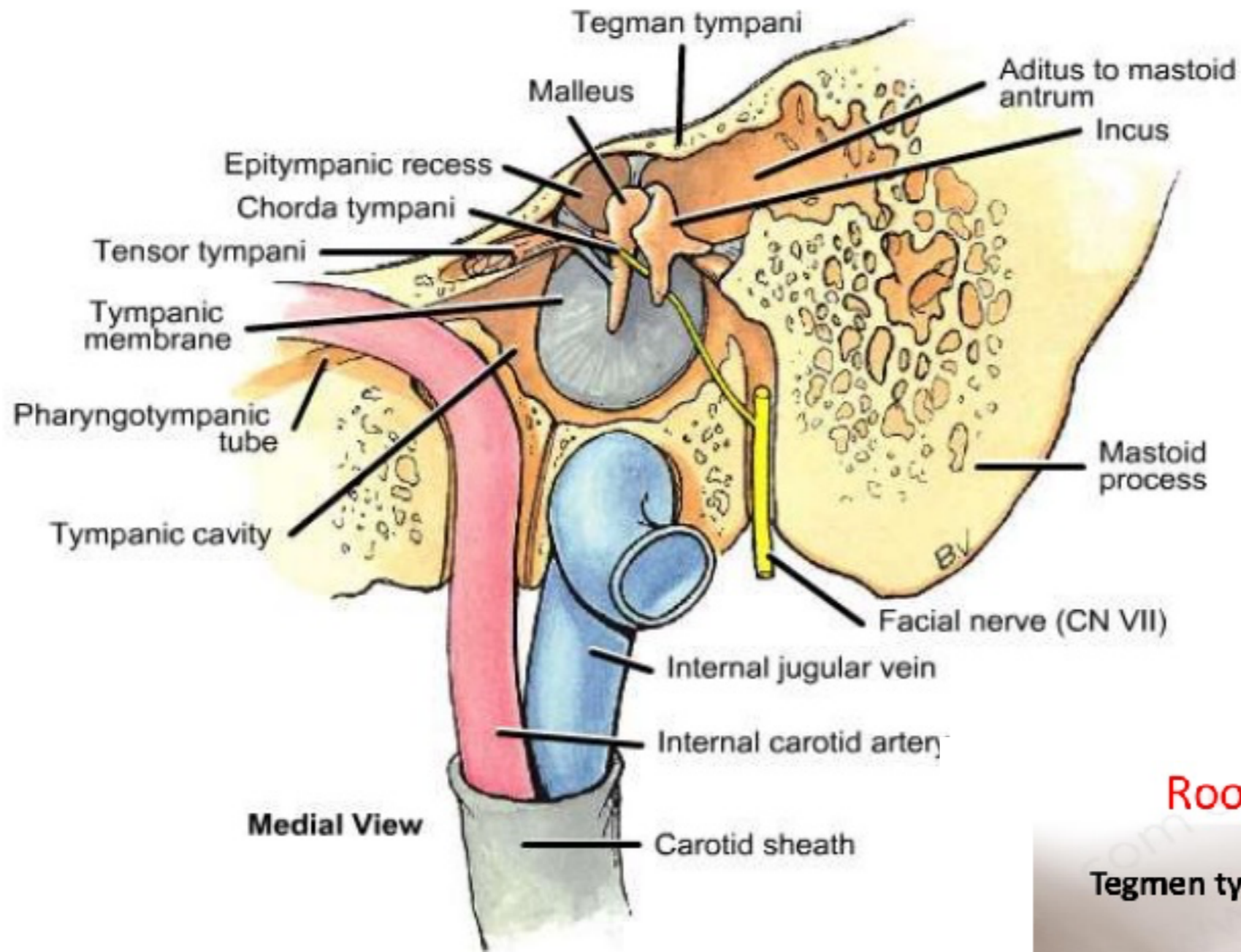
MIDDLE EAR



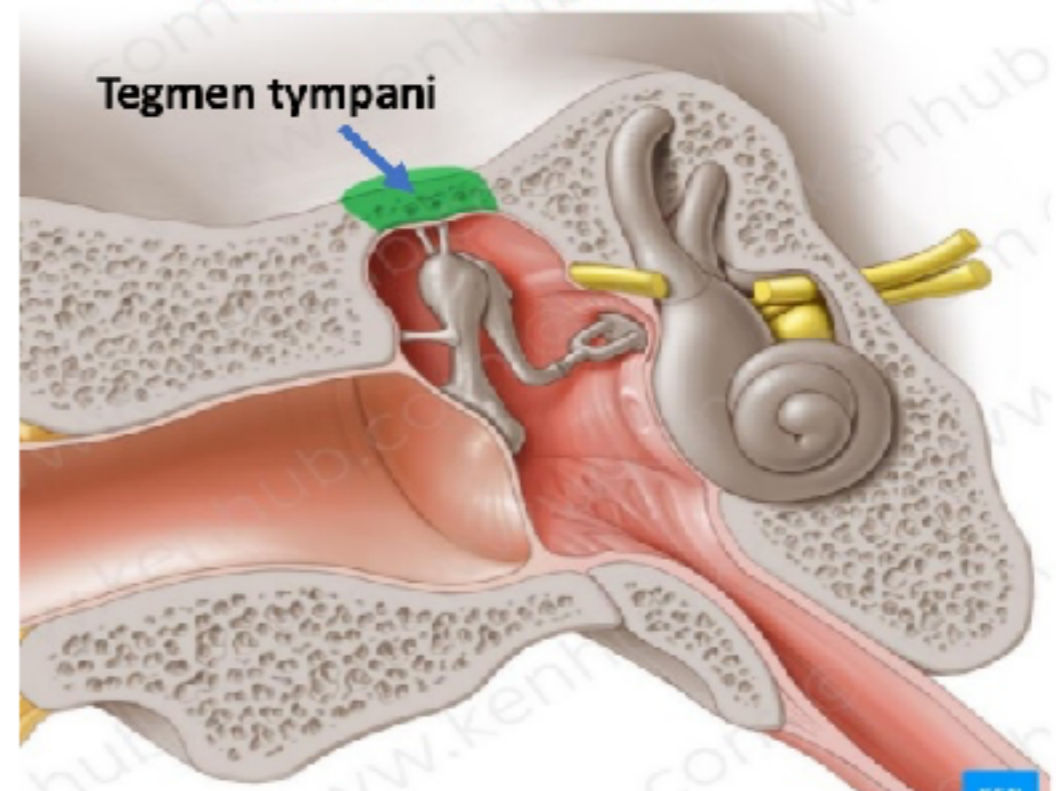
MIDDLE EAR CLEFT



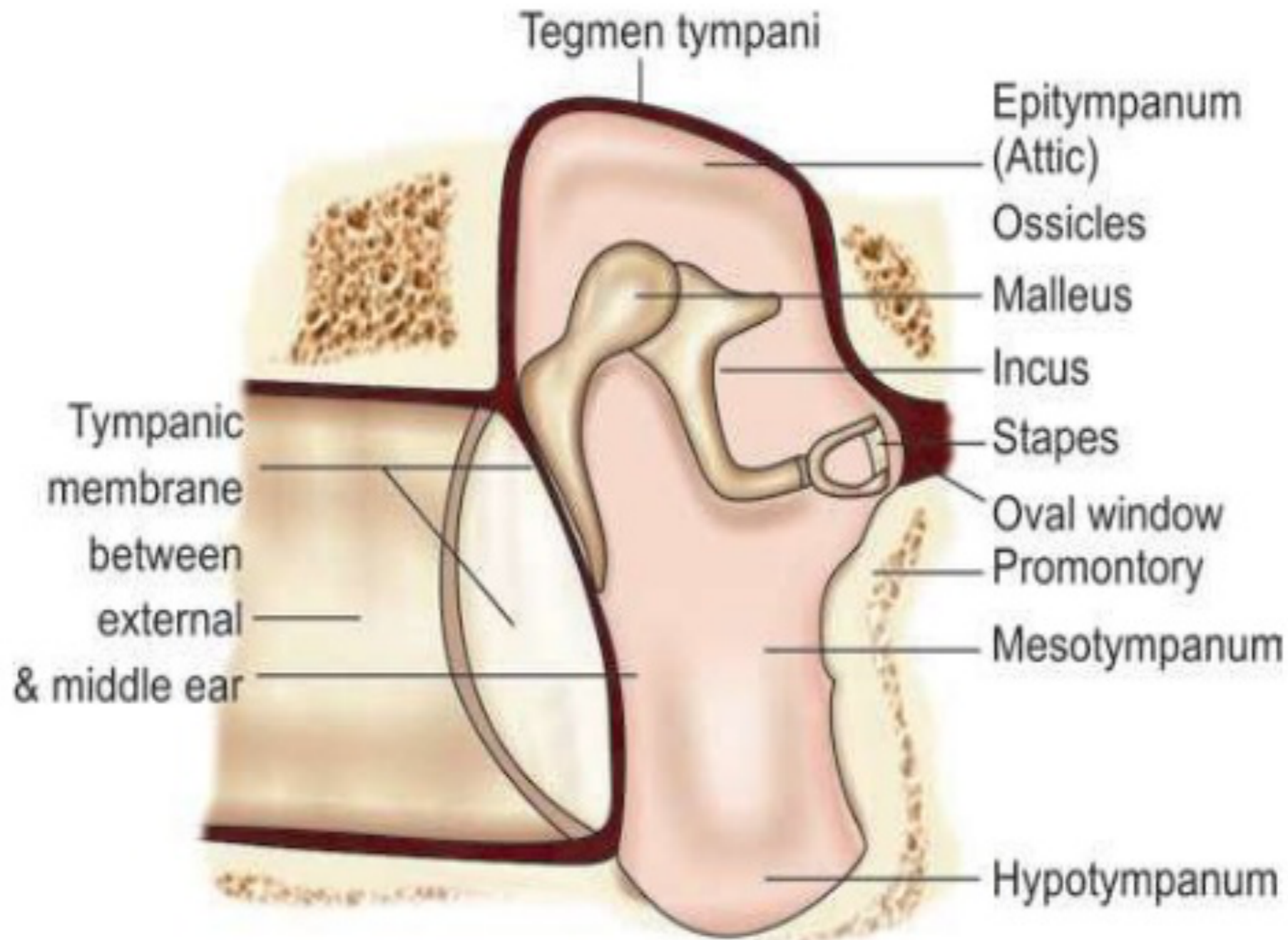




Roof of Middle ear



PARTS OF MIDDLE EAR



1) Auditory Ossicles:

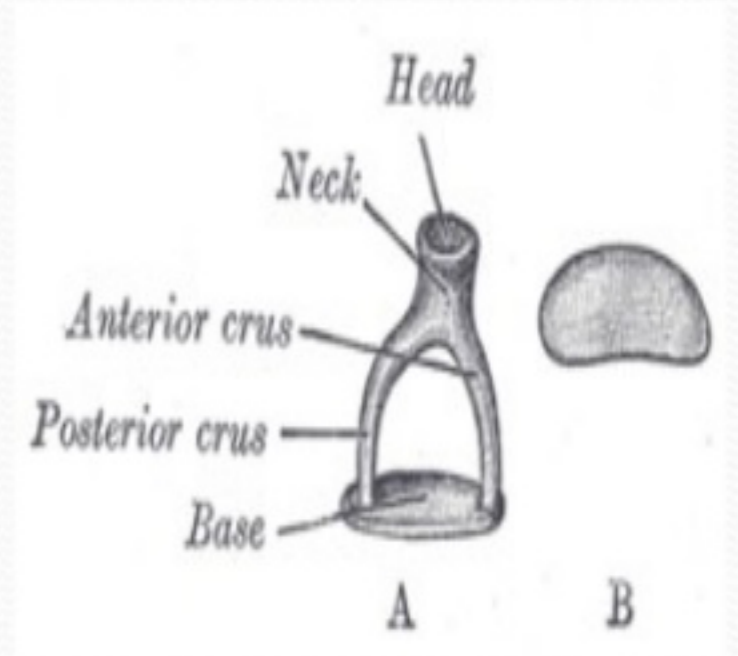
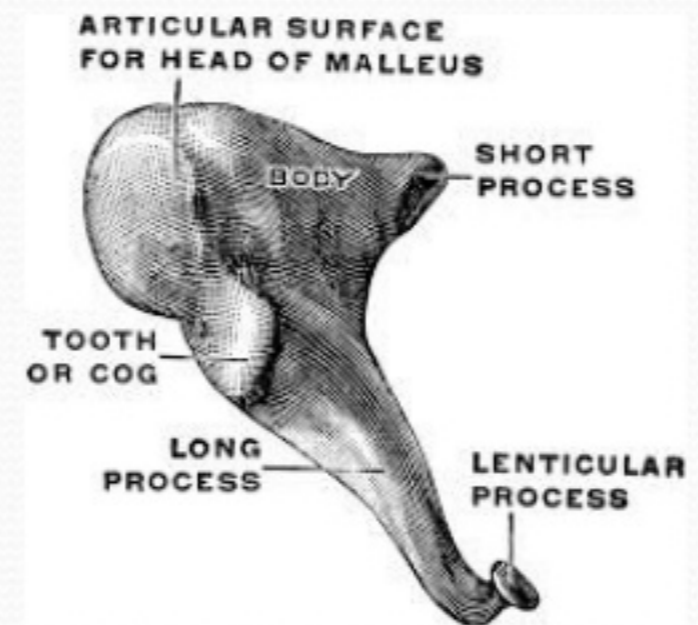
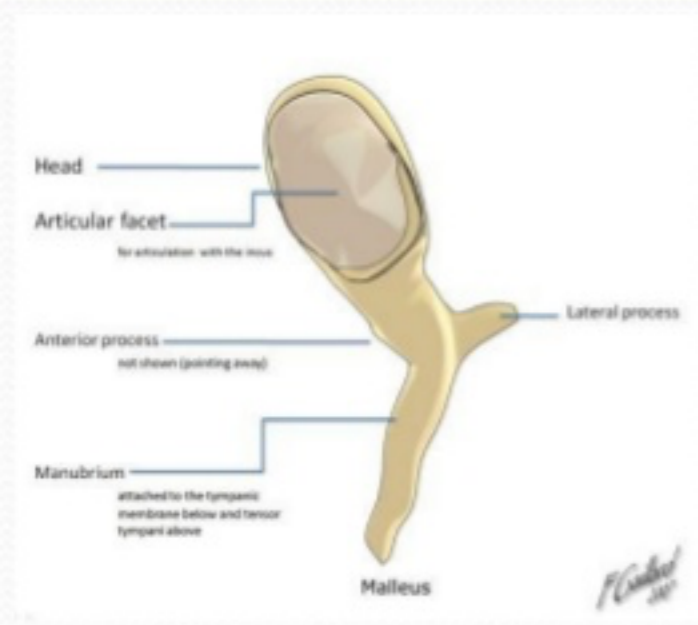
- These are the smallest three bones of the body
- Connected by synovial joints

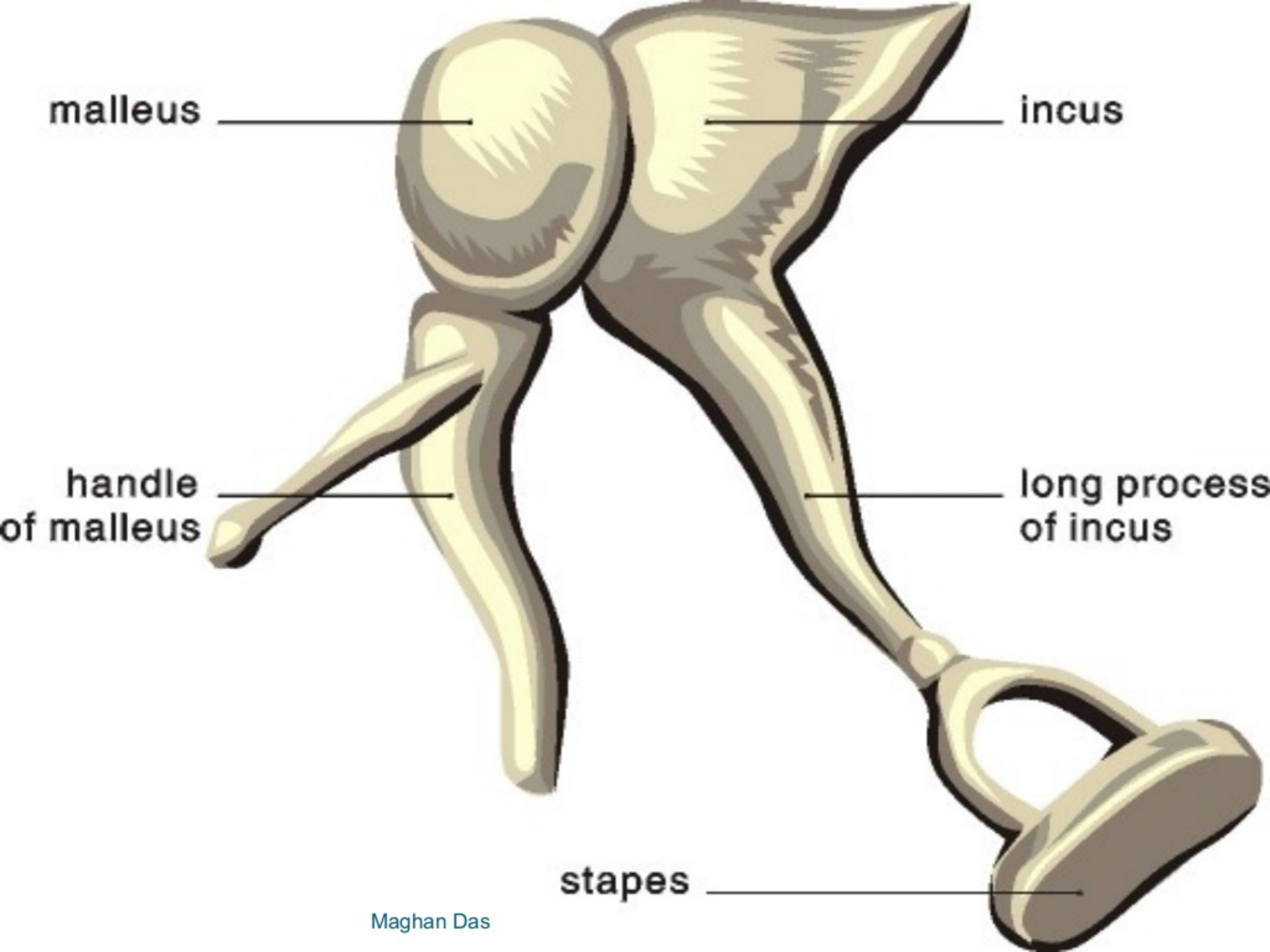


3. The Malleus OR The Hammer

2. The Incus OR The Anvil

3. The Stapes OR The Stirrup





malleus

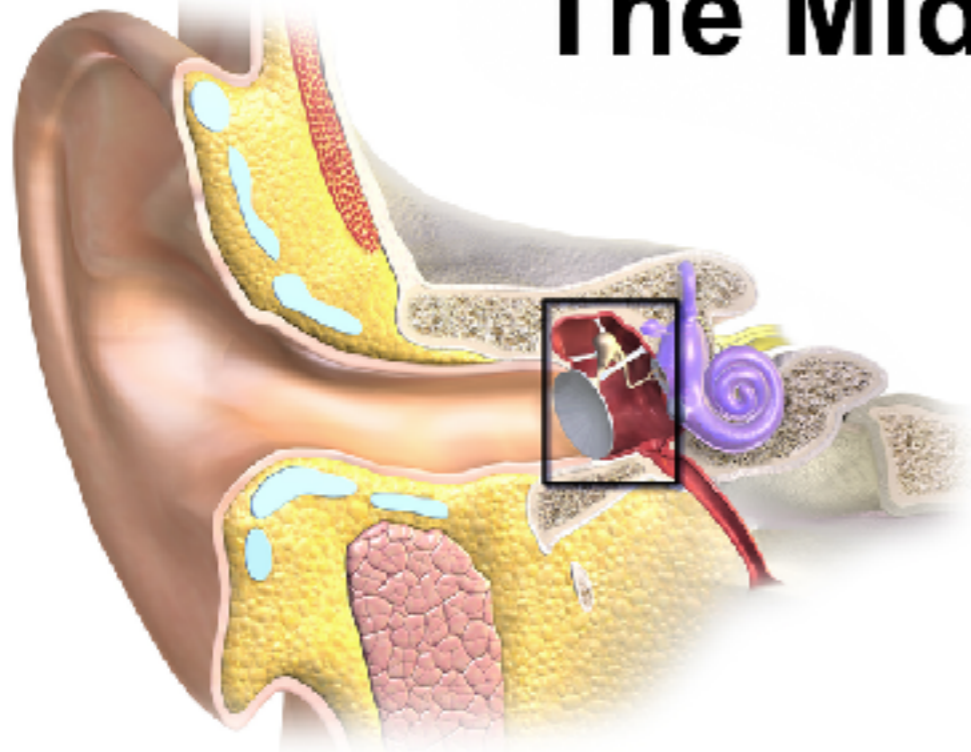
incus

handle
of malleus

long process
of incus

stapes

The Middle Ear



Auditory ossicles

Malleus

Incus

Stapes

Stabilizing ligaments

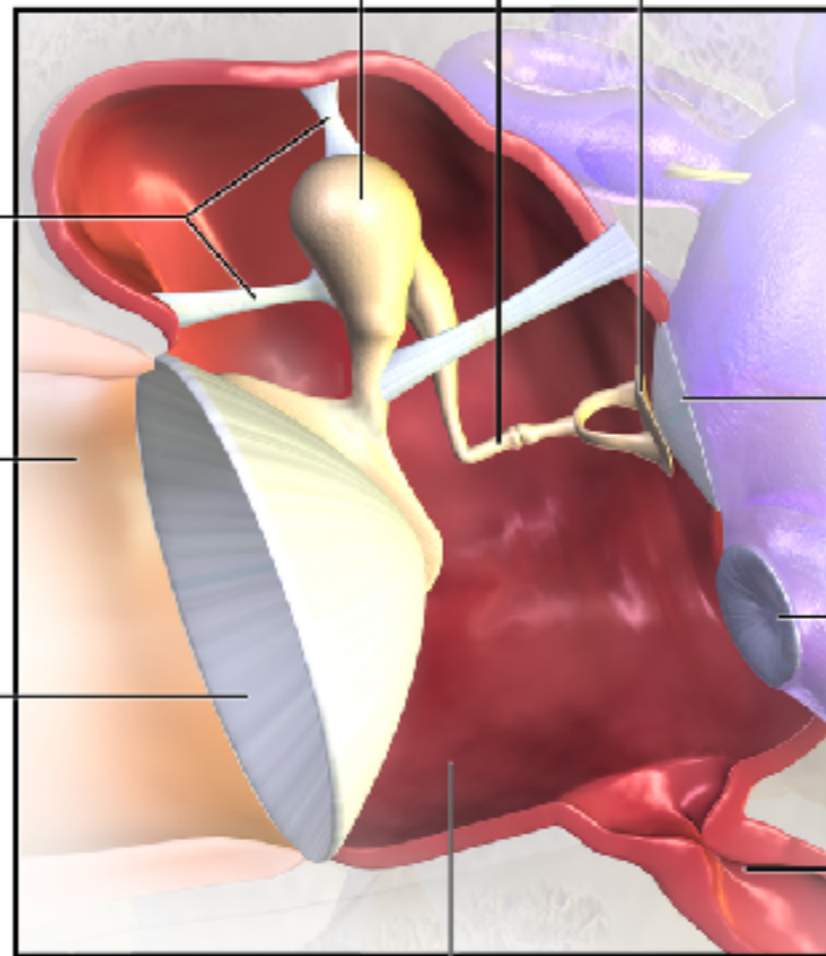
External acoustic meatus

Tympanic membrane

Oval window

Round window

Auditory tube



Tympanic cavity
(middle ear)

Outer Ear

Ossicular Chain

Vestibule

Inner Ear

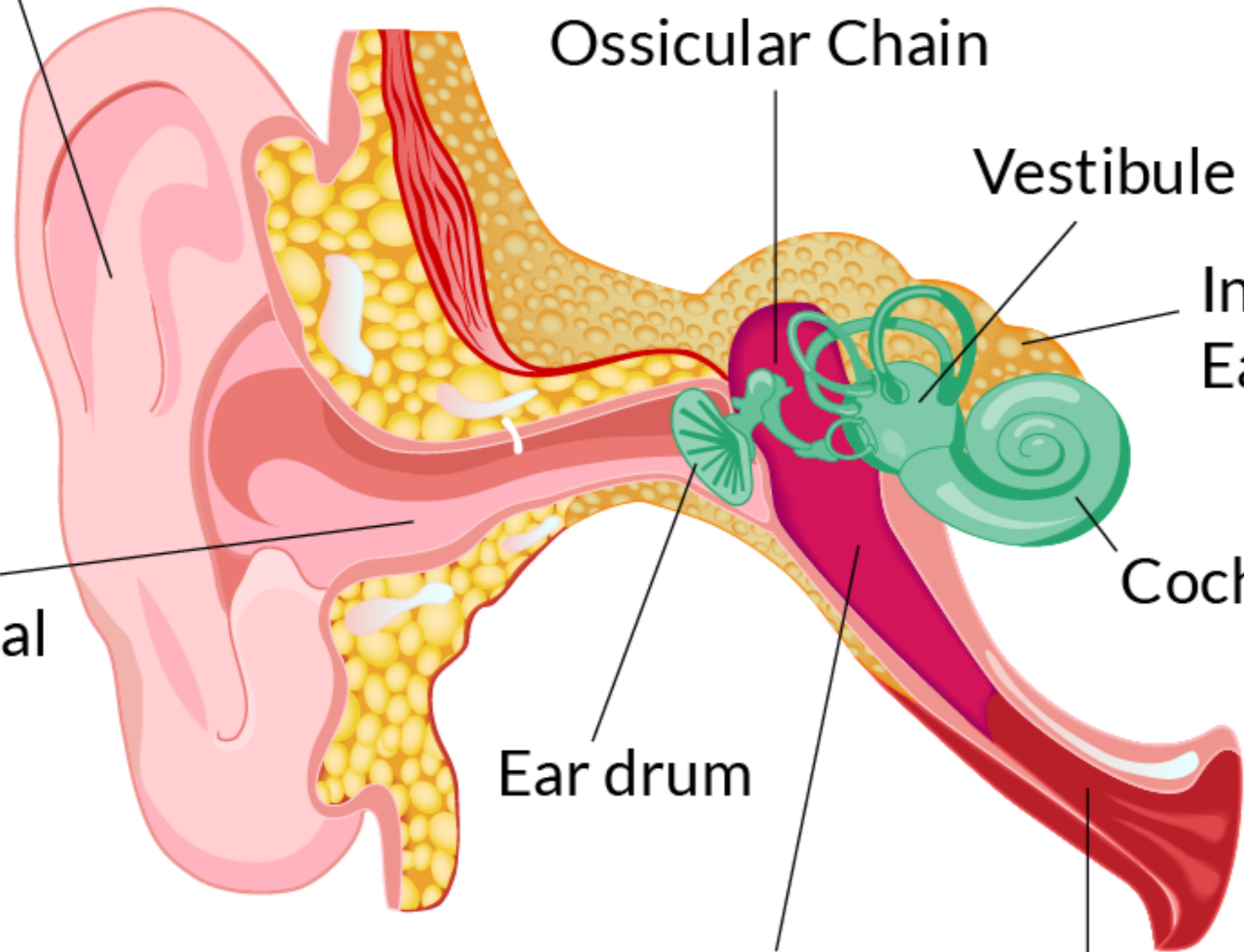
Ear Canal

Cochlea

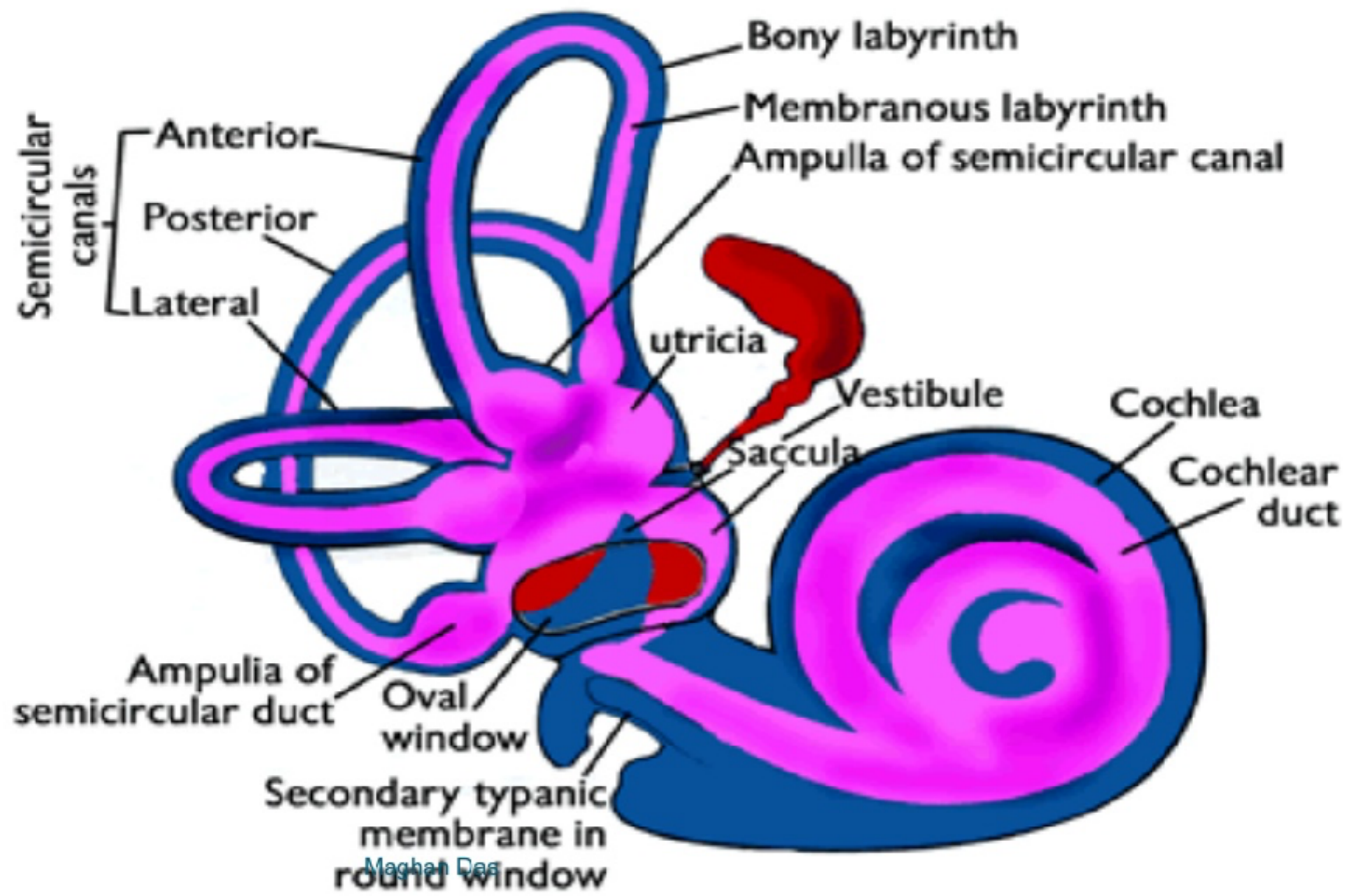
Ear drum

Middle Ear

Eustachian Tube



Labyrinth



Maghan Das

