

CBCS SCHEME

--	--	--	--	--	--	--	--	--	--	--	--

17CV54

Fifth Semester B.E. Degree Examination, Jan./Feb. 2021
(CIVIL ENGINEERING)

COMPUTER AIDED BUILDING PLANNING AND DRAWING

Time: 3 Hours

Max. Marks: 100

- Note: 1. Answer any *TWO* full questions as per INTERNAL CHOICE.
2. Assume any missing data suitably.

Q1. Draw the cross section of lintel beam and chejja for the following details:

Size of opening of window=1.5m

Bearing of lintel:0.2m

Thickness of wall:0.23m

Depth of lintel beam:0.2m

Projection of chejja:0.6m

Thickness of chejja at face of lintel:100mm and at end 50mm

Reinforcement details in lintel beam and bottom:3#10 @top 2#8

Stirrups 2LVS 8mm dia @ 150mm c/c

Chejja main reinforcement # 8 @ 100mm c/c. Distribution 6mm dia at 150mm c/c

(40 Marks)

OR

Q2. Draw two consecutive courses for corner joints of the following walls in English bond.

a) One brick thick wall: 200x200

b) One and half brick thick wall : 300x300

(40 Marks)

Q3. Line diagram of Single Storey residential building is given in figure Q3(a). Draw to scale the following:

- Plan at sill
- Front elevation
- Section along XX.
- Schedule of Openings

(60 Marks)

OR

Q4. Line diagram of Single Storey residential building is given in figure Q4(a). Draw to scale the following:

- Plan at sill
- Front elevation
- Section along AB.
- Schedule of Openings

(60 Marks)

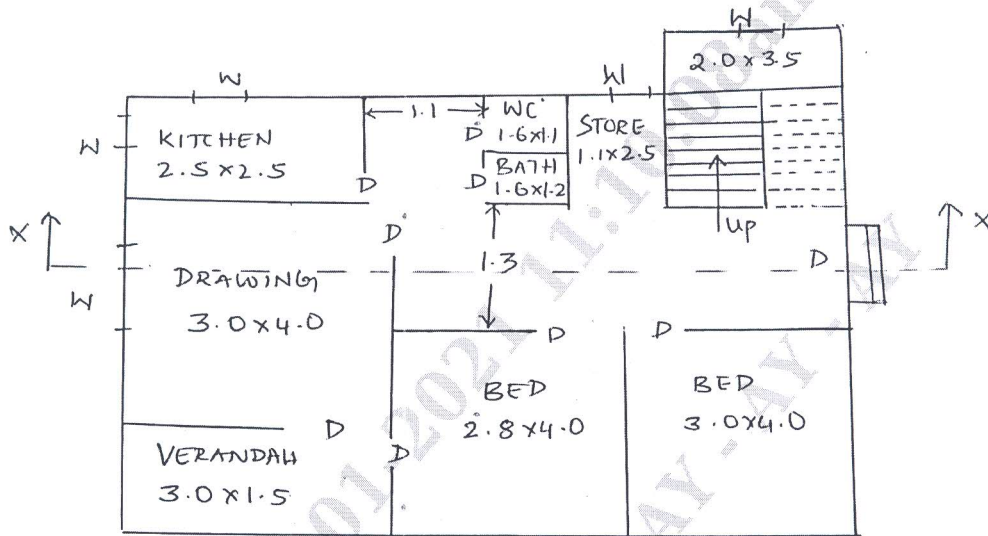


Fig 3(a)

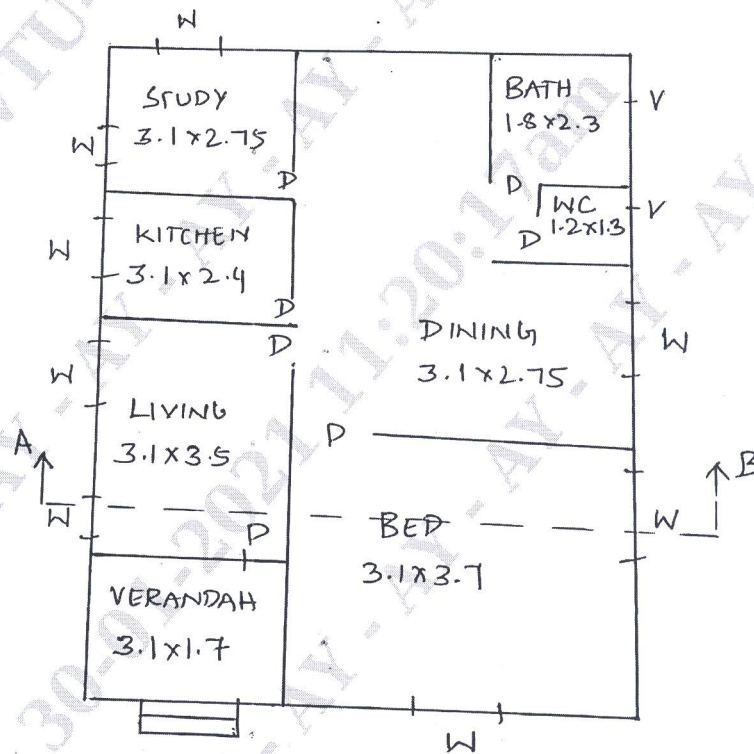


Fig 4(a)