



U.S. _____

18ME36A/18MEA306/18MA36/18ME46A

Third/Fourth Semester B.E. Degree Examination, July/August 2021

COMPUTER AIDED MACHINE DRAWING

Time: 3 Hours

Max. Marks: 100

- Note:
1. Answer any ONE question from each of the parts A, B and C.
 2. Use **First angle** projections only.
 3. If any data is missing it may be suitably assumed and mentioned.
 4. All the calculations should be on the answer sheet supplied.
 5. All the dimensions are in mm.
 6. Drawing instruments may or may not be used for sketching.
 7. Part C assembly view should be in 3-D and other views in 2-D.

Part – A

1. Draw two views of square headed bolt of size 25 mm diameter and 100 mm long. Indicate all the dimensions. **25 Marks**
2. Draw the following profiles.
a) BSW thread and (b) Sellers thread of pitch 50 mm both **25 Marks**

Part – B

3. Draw the following view of a Knuckle joint used to joining two rods of diameter 20 mm (a) Sectional front view (b) side view. **25 Marks**
4. Draw sectional front view and side view of Oldham's coupling to connect two rods of diameter 25 mm, indicate all dimensions. **25 Marks**

Part – C

5. Figure 1 shows the details of a Plummer block. Assemble the parts of the Plummer block and show the following views.
a. Half sectional front view showing the right half in section.
b. Top view. **50 Marks**
6. Figure 2 shows the part drawing of a tail stock. Assemble the tail stock and show the following views.
a. Sectional front view showing the top spindle portion in section.
b. Left profile view. **50 Marks**

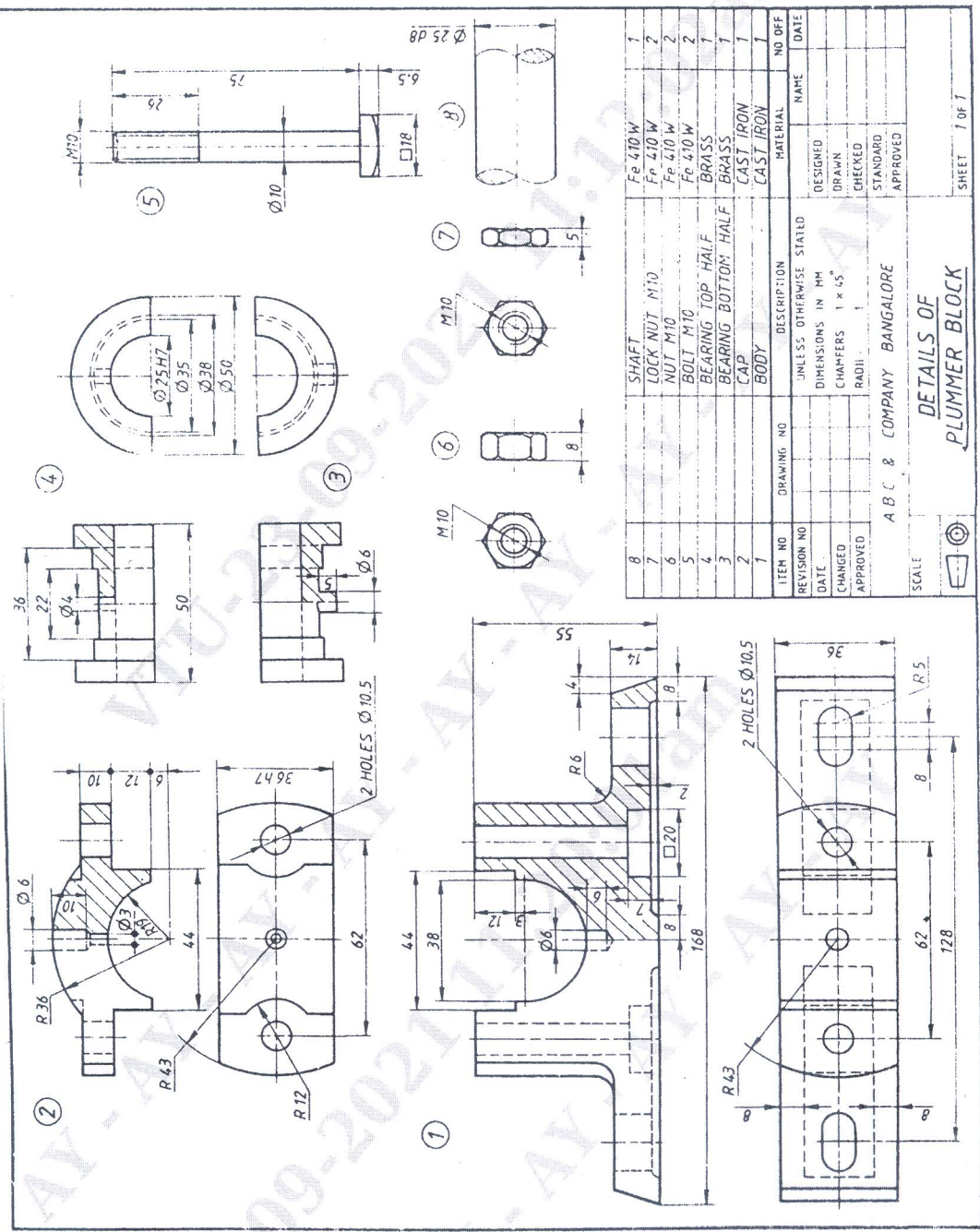


Figure 1: Details of Plummer block.

USN

18ME36A/18MEA306/18MA36/18ME46A

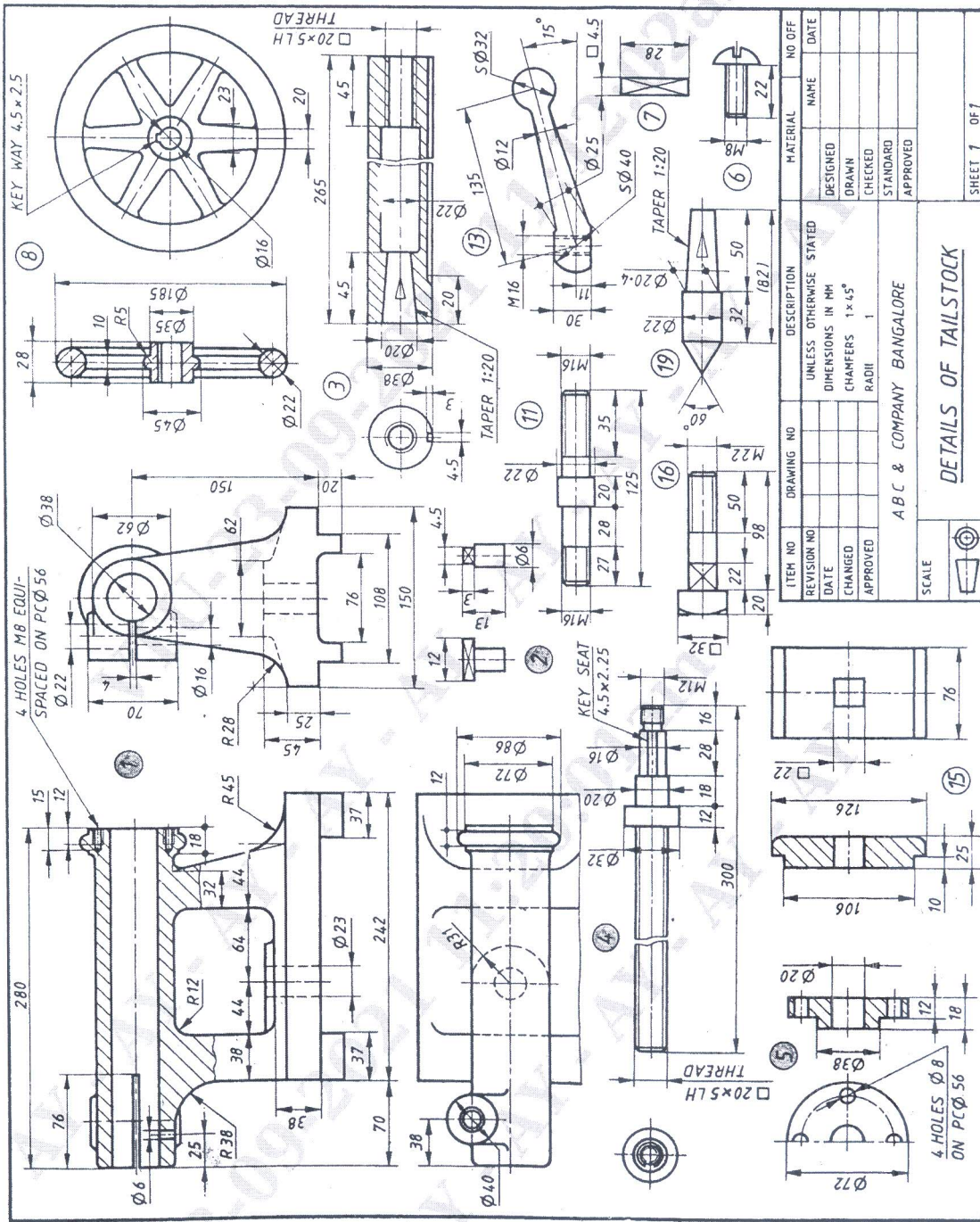


Figure 2: Details of tailstock.