

USN

--	--	--	--	--	--	--	--	--	--

17CT73

Seventh Semester B.E. Degree Examination, Feb./Mar. 2022 Estimation and Costing

Time: 3 hrs.

Max. Marks:100

- Note:** 1. Answer any **THREE** questions by selecting any **TWO** full questions from **PART-A** and **ONE** from **PART- C**.
2. **PART-B** is compulsory.
3. Missing data, if any may be suitably assumed.

PART – A

- 1 Define Estimate. What are different types of estimates? Explain any four different types of estimates. (20 Marks)
- 2 Explain briefly:
i) Various purpose of Estimating
ii) Measurement book and schedule of rates
iii) Administrative approval and technical sanction
iv) Tender and quotation
v) Security deposit and EMD. (20 Marks)
- 3 Write specifications for the following items of work:
i) Reinforced cement concrete
ii) Cement plastering
iii) BBM in CM 1:6
iv) Earthwork excavation
v) Painting work. (20 Marks)
- 4 Carryout the rate analysis for the following:
i) BBM for superstructure in CM 1:6
ii) CC of 1:2:4 for bed in foundation
iii) 12mm thick plastering for walls with CM 1:6
iv) Coursed rubble masonry in CM 1:6. (20 Marks)

Important Note : 1. On completing your answers, compulsorily draw diagonal cross lines on the remaining blank pages.
2. Any revealing of identification, appeal to evaluator and /or equations written eg, 42+8 = 50, will be treated as malpractice.

PART - B

- 5 The plan and cross section of residential building are as shown in Fig.Q.5. Work out the quantities and prepare the cost abstract of the following items of work.
- i) Earthwork excavation for foundation in ordinary soil @ Rs.300/cum.
 - ii) Plinth concrete of DPC 1:2:4 @ Rs. 4500/cum.
 - iii) First class brickwork in CM 1:6 for superstructure @ Rs.4000/cum.
 - iv) Distemper wash for inside and ceiling at Rs.200/sqm.
 - v) Wood work for fully panelled teakwood doors @ Rs.6200/sqm and partly panelled and partly glazed windows for ventilators @ 4900/sqm.
- (40 Marks)

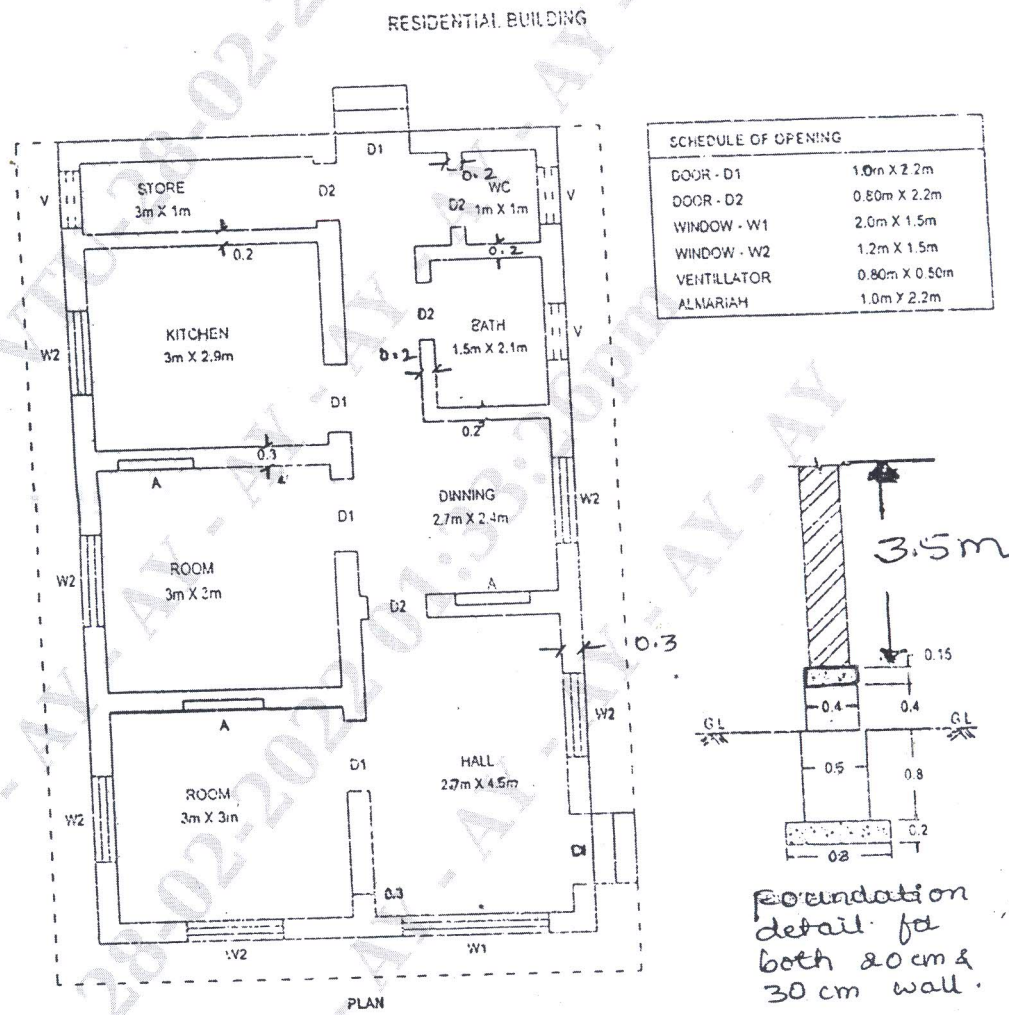


Fig.Q.5

PART - C

6 Prepare a detailed estimate of a manhole in Fig.Q.6 for the following and the abstract.

- i) Earthwork excavation @ Rs.450/cum
- ii) Cement concrete 1:3:6 @ Rs.600/cum
- iii) I-class brickwork in 1:4 cement mortar @ Rs.500/cum
- iv) Cement pointing @ Rs.10/sqm.

(20 Marks)

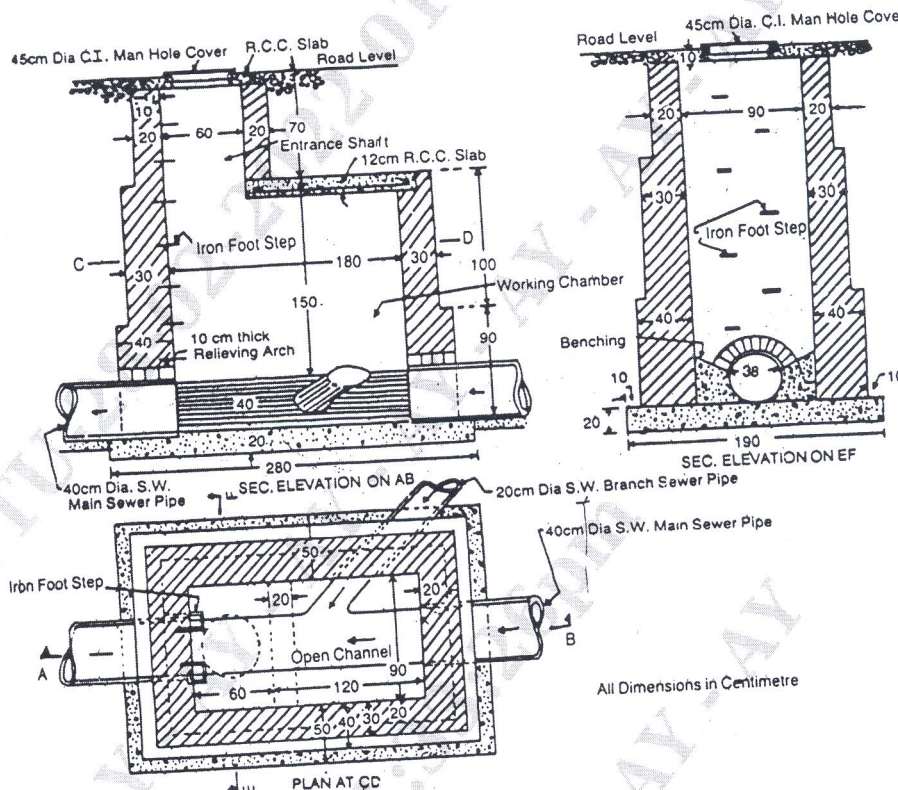


Fig.Q.6

7 Estimate the cost of earthwork for a portion of a road from the following data. Road width at the formation level surface is 8 meter. Side slopes 2:1 in banking and 1½ :1 in cutting. Length of chain is 30 meter.

Chainage	20	21	22	23	24	25	26	27	28	29	30
Ground level	71.20	71.25	70.90	71.25	70.80	70.45	70.20	70.35	69.10	69.45	69.70
Formation level	70.00										
	Upward gradient of 1 in 200										

Take the rates of earthwork as Rs.400 per cum in banking and Rs.600/- per % cum in cutting. (20 Marks)
