

CBCS SCHEME



21ARC63

USN

--	--	--	--	--	--	--	--	--	--

Sixth Semester B.Arch. Degree Examination, June/July 2024 Landscape Architecture

Time: 3 hrs.

Max. Marks:100

- Note: 1. Answer any FIVE full questions, choosing ONE full question from each module.
2. Missing data, if any, may be suitably assumed.*

Module-1

- 1 Define the role of Landscape architecture in today's context when the need is to design through environment centric lens. (20 Marks)

OR

- 2 Write short notes on the following :
i) Protecting biodiversity through landscape design
ii) Landscape design for sustainable development. (20 Marks)

Module-2

- 3 Elaborate on the assistance provided by the process of site analysis and site planning in structuring of the site for development. (20 Marks)

OR

- 4 Taking minimum two examples, discuss the relation that can be achieved between built and unbuilt spaces in landscape design as a response to architecture. (20 Marks)

Module-3

- 5 Taking examples, discuss the role of primary elements, land and water in shaping and articulating open spaces in a project. (20 Marks)

OR

- 6 What role does the following secondary elements play in activating the outdoor landscape spaces.
i) Street furniture
ii) Lighting. (20 Marks)

Module-4

- 7 The western philosophies of achieving order over nature reached its peak during the French Renaissance era which manifested in landscape design of that time too. Taking an example which is an epitome of the above sentence, elaborate on how perfection in nature was achieved. (20 Marks)

OR

- 8 Discuss the landscape philosophies of any two of the following landscape masters :
i) Ravindra Bhan
ii) Peter walker
iii) Martha Schwartz
iv) Shaheer associates. (20 Marks)

Module-5

- 9 Outdoor space design plays an important role in nurturing learning culture in any educational campus. Taking four components of landscape, elaborate on how they add value in outdoor learning process in an institution. (20 Marks)

OR

- 10 For a given courtyard which is a part of the classroom block in a school, propose a landscape design that is functional and aesthetic, which allows space usage in multiple ways for the school children. Draw the proposed plan to scale with detailed labeling of the proposed elements. Showcase your design through following drawings [to appropriate scale].
- Section across the courtyard
 - Two any unique designed components as sketches
 - One construction detail of landscape element
 - Suggest min. 2 trees that are chosen for vegetation in courtyard
- [Base plan for reference added]. (20 Marks)

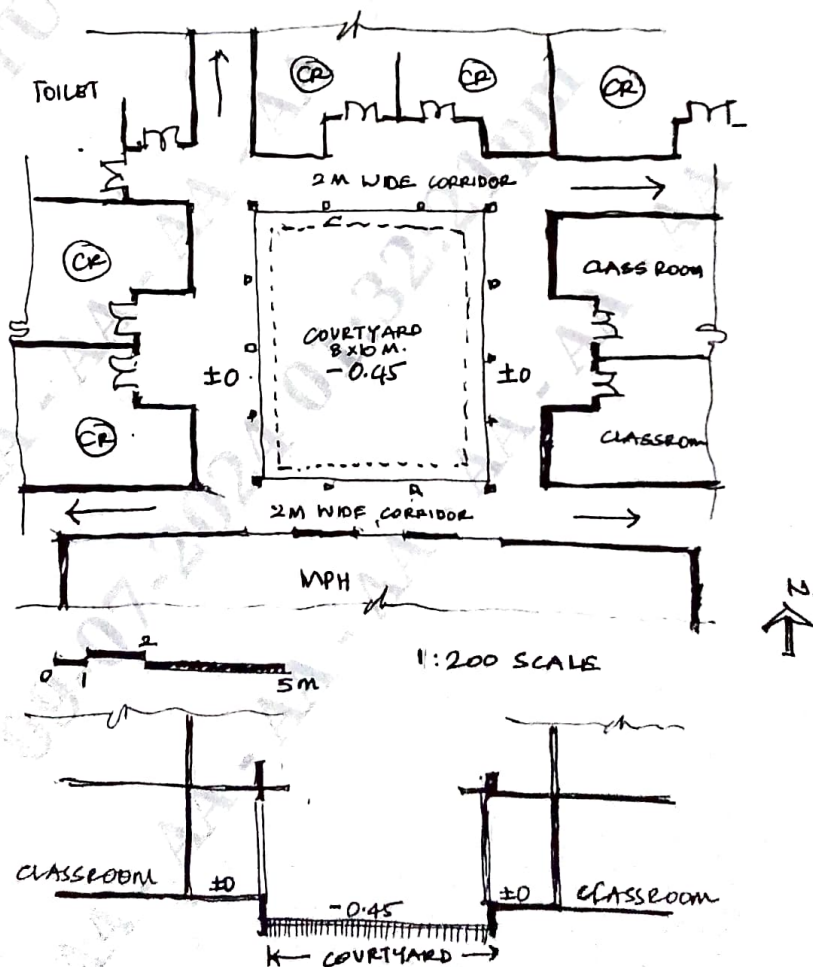


Fig.Q10

(Missing data to be assumed and mentioned.)
